



LUND UNIVERSITY

Second malignant neoplasms in digestive organs after childhood cancer: a cohort-nested case-control study

Tukenova, Markhaba; Diallo, Ibrahima; Anderson, Harald; Hawkins, Mike; Garwicz, Stanislaw; Sankila, Risto; El Fayeck, Chiraz; Winter, Dave; Rubino, Carole; Adjadj, Elisabeth; Haddy, Nadia; Oberlin, Odile; Möller, Torgil; Langmark, Froydis; Tryggvadottir, Laufey; Pacquement, Helene; Svahn-Tapper, Gudrun; de Vathaire, Florent

Published in:

International Journal of Radiation Oncology, Biology, Physics

DOI:

[10.1016/j.ijrobp.2011.05.069](https://doi.org/10.1016/j.ijrobp.2011.05.069)

2012

[Link to publication](#)

Citation for published version (APA):

Tukenova, M., Diallo, I., Anderson, H., Hawkins, M., Garwicz, S., Sankila, R., El Fayeck, C., Winter, D., Rubino, C., Adjadj, E., Haddy, N., Oberlin, O., Möller, T., Langmark, F., Tryggvadottir, L., Pacquement, H., Svahn-Tapper, G., & de Vathaire, F. (2012). Second malignant neoplasms in digestive organs after childhood cancer: a cohort-nested case-control study. *International Journal of Radiation Oncology, Biology, Physics*, 82(3), E383-E390. <https://doi.org/10.1016/j.ijrobp.2011.05.069>

Total number of authors:

18

General rights

Unless other specific re-use rights are stated the following general rights apply:

Copyright and moral rights for the publications made accessible in the public portal are retained by the authors and/or other copyright owners and it is a condition of accessing publications that users recognise and abide by the legal requirements associated with these rights.

- Users may download and print one copy of any publication from the public portal for the purpose of private study or research.
- You may not further distribute the material or use it for any profit-making activity or commercial gain
- You may freely distribute the URL identifying the publication in the public portal

Read more about Creative commons licenses: <https://creativecommons.org/licenses/>

Take down policy

If you believe that this document breaches copyright please contact us providing details, and we will remove access to the work immediately and investigate your claim.

LUND UNIVERSITY

PO Box 117
221 00 Lund
+46 46-222 00 00

Second malignant neoplasms in digestive organs after childhood cancer: a cohort-nested case-control study.

Markhaba Tukenova^{1,2,3} Ph.D., Ibrahima Diallo^{1,2,3} Ph.D., Harald Anderson⁴ Ph.D., Mike Hawkins⁵ Ph.D., Stanislaw Garwicz ⁶ Ph.D, Risto Sankila⁷ Ph.D, Chiraz El Fayech^{1,2,3} M.D., Dave Winter⁵, Carole Rubino^{1,2,3} Ph.D., Elisabeth Adjadj^{1,2,3,8} Ph.D., Nadia Haddy^{1,2,3} Ph.D., Odile Oberlin^{1,2,3} M.D., Torgil Moller⁴ Ph.D, Froydis Langmark⁷ M.D., Laufey Tryggvadottir⁹ Ph.D, Hélène Pacquement⁸ M.D., Gudrun Svahn-Tapper⁴ Ph.D, Florent de Vathaire^{1,2,3} Ph.D.

1 Radiation Epidemiology Group, CESP Center for Research in Epidemiology and Population Health, U1018, Inserm, F-94807, Villejuif, France

2 University Paris Sud 11, UMRS 1018, F-94807, Villejuif, France

3 Gustave Roussy Institute, F-94805, Villejuif, France

4 Department of Cancer Epidemiology, Lund University, Sweden

5 Center for Childhood Cancer Survivor Studies, Department of Public Health & Epidemiology, University of Birmingham, UK

6 Childhood Cancer Research Center, University Children's Hospital, SE-22185 Lund, Sweden

7 Finnish Cancer Registry, Helsinki, Finland

8 Curie Institute, Paris F-75005 Paris, France

9 Norwegian Cancer Registry, Oslo, Norway

Corresponding author

Florent de Vathaire

INSERM U605

Institut Gustave Roussy

39 rue Camille Desmoulins

94805 Villejuif Cedex

France

Tel : +33 (0)1 42 11 54 57

Fax: +33 (0) 1 42 11 53 15

Mail : fdv@igr.fr

ABSTRACT

Purpose: Cancers of the digestive system constitute a major risk for childhood cancer survivors treated with radiotherapy once they reach adulthood. The aim of this study was to determine therapy-related risk factors for the development of a second malignancy in the digestive organs (SMDO) after a childhood cancer.

Methods: Among 4 568 2-year survivors of a childhood solid cancer diagnosed prior to 17 years of age at eight French and British centers, and 25 120 patients diagnosed as having a malignant neoplasm before the age of 20, extracted from the Nordic Cancer Registries, we matched 58 cases (17 women and 41 men) of SMDO and 167 controls, in their respective cohort, for sex, age at first cancer, calendar year of occurrence of the first cancer and duration of follow-up. The radiation dose received at the site of each second malignancy and at the corresponding site of its matched control was estimated.

Results: The risk of developing a SMDO was 9.7-fold higher in relation to the general populations in France and the United Kingdom. In the case-control study, a strong dose-response relationship was estimated, compared to survivors who had not received radiotherapy, the odds ratio was 5.2 (95%CI: 1.7-16.0) for local radiation doses between 10 and 29 Gy and 9.6 (95%CI: 2.6-35.2) for doses equal to or greater than 30 Gy. Chemotherapy was also found to increase the risk of developing SMDO.

Conclusions: This study confirms that childhood cancer treatments strongly increase the risk of SMDO, which occur only after a very long latency period.

Short title : Second malignant neoplasms in digestive organs after childhood cancer.

Key words: childhood cancer, second malignancy in the gastrointestinal tract, radiotherapy, chemotherapy.

Abbreviations: SMN: second malignant neoplasm(s); FMN: first malignant neoplasm(s); SMDO: second malignancy in digestive organs; SMDT: second malignancy in digestive tract; SIR: standardized incidence ratio; AER: annual excess risk; CI: confidence interval, OR: odds ratio; CCSS: Childhood Cancer Survivors Study.

Conflict of interest:

We declare no conflicts of interest.

It is generally recognized that long-term survivors of childhood cancer are at a substantially increased risk of developing second malignant neoplasms (SMN) at a broad spectrum of anatomic sites following exposure to chemotherapy and radiotherapy¹⁻⁵. The importance of genetic factors must also be considered⁶⁻⁷. Unlike leukemia, solid tumors generally occur much later following treatment of the first malignancy⁸. Pediatric survivors experience significantly increased risk of cancers of the female breast, thyroid, digestive tract, lung, bone and connective tissue⁹⁻¹⁰. However, digestive system cancers account for about half of the cancers in excess diagnosed in atomic bomb survivors¹¹, and thus might also be the case in survivors of childhood cancer. The etiology and risk factors are incompletely understood, but often include chemotherapy agents and ionizing radiation, while the risk increases with increasing follow-up after radiation and if exposure occurred at a young age¹²⁻¹³. Risk of colorectal cancers was shown not to increase until 10 years after the diagnosis of childhood Hodgkin's disease and remained elevated for at least a decade, suggesting late radiogenic effects¹⁴, although data are currently insufficient to ascertain whether the increased risk persists. Radiation exposure has been reported to increase a second malignancy in digestive organs (SMDO) in irradiated adult groups¹⁵. Likewise, results from analysis of the large-scale Childhood Cancer Survivor Study (CCSS) found that gastrointestinal carcinomas were associated with radiation and alkylating agent therapy¹⁶. However, very limited data are available on dose-related risks in childhood cancer survivors. The main objective of this population-based case-control study was to estimate the relationship between radiotherapy doses received at a given site in the digestive tract and risk of SMDO at that site, in order to determine the risk conferred by radiation therapy.

METHODS

Study population

French and UK cohort

An initial cohort which included 4 590 2-year survivors of childhood cancer treated in, or before the end of, 1985 at eight cancer centers in France and the UK for all types of FMN (with the exception of leukemia) was created between 1985 and 1995 ¹⁰.

A total of 4 568 patients treated before the age of 17 were included. UK patient follow-up was traced using the National Health Service Central Registers ¹⁷.

Follow-up for French patients were assessed using the medical records from the treatment centers, and was also updated from September 1st, 2005 using a self-questionnaire. This very wide-scale questionnaire provided information on socioeconomic status, cancer risk factors, quality of life and health outcome and was based on that of the BCSS ¹⁸. A total of 2 546 patients who were still alive were considered eligible. A questionnaire was sent by regular mail to the 2 095 patients for whom we had obtained the most recent address from the National Health Insurance System and who had sent back a signed consent agreement. This agreement included an authorization to contact the medical practitioner and medical facilities. A total of 1 791 (70%) patients returned the completed questionnaire by December 31, 2008.

Cohort study

The cohort study focused exclusively on the French-UK cohort. Results concerning the Nordic cohort had been reported in a previous publication ³. There were 3 350 French individuals who were followed up until the date of the occurrence of a SMDO, the date of death, the date of response to the self-questionnaire or the date of the

last medical contact, whichever occurred first. There were 1 218 British individuals who were followed up through December 2005 until the date of the occurrence of a SMDO or until the date of death, whichever occurred first.

The expected number of SMDO was obtained for each gender, 5-year age group and 5-year calendar period, by multiplying the reference incidence rates by the number of person-years at risk. We used estimates of the French national cancer incidence rates for patients treated at French centers and the United Kingdom national cancer incidence rates for those treated in the UK as reference rates. The standardized incidence ratio (SIR), calculated as the ratio between the observed number of SMDO and the expected number, was considered to follow a Poisson distribution. The annual excess risk (AER) was calculated as the difference between the observed and expected number of SMDO, divided by the number of person-years of follow-up. AMFIT Software was used for cohort analysis.

Nordic cohort

The Nordic cohort was simply used to provide additional cases and controls for the nested case-control portion of the study. This cohort included 25 120 childhood cancer patients diagnosed as having a malignant neoplasm before the age of 20 years recorded in one of the five Nordic National Cancer Registries (Denmark, Finland, Iceland, Norway, and Sweden) between 1960 and 1987 and followed up through December, 31st 1991 for the date of occurrence of SMN, date of death or date of emigration, whichever occurred first, by cross-linking with national cancer registries. All 5 cancer registries are population-based, with very good coverage of incident cancers. Data collection and coding methods employed by each registry have previously been described in detail ³. In contrast with the French-UK cohorts,

chemotherapy and dosimetry estimates were carried out only for cases and controls¹⁹.

Case ascertainment

SMDO eligible for inclusion in this analysis fell into the International Classification of Diseases of Oncology (ICDO-0) as 150 to 159 (excluding 158). Tumors of the digestive tract (SMDT: excluding liver, pancreas and digestive tract unspecified) (ICDO-0) 150 to 154 were analyzed separately. Sixteen validated SMDO cases²⁰ from the Nordic cohort were included. We identified, via a self-questionnaire and medical records, 56 SMDO cases in the French-UK cohort, among whom 42 were included and 14 were excluded for the following reasons: no historical information on deceased patients (n=7), relapse of the initial tumor or metastasis (n=4) and peritoneal tumor (n=3). Finally, 58 cases were included in the present study.

Case-control study

Each case was matched with 3 controls (52 cases), 2 controls (5 cases) and 1 control (1 case) selected from among all patients from the respective cohort according to sex, age at first cancer (± 3 years) and calendar year of occurrence of FMN (± 3 years, except for 1 control, diagnosed at +6 years), totaling 167 controls (118 males and 49 females). Controls had to be followed up over a period that was at least equal to the interval between the first and second cancer of the matched case. This period was defined as the follow-up period. Conditional logistic regression was used to analyze the risk of a SMDO as a function of radiation, chemotherapy and interaction between various exposures²¹. Multivariate analysis was adjusted for the type of first cancer diagnosis. For variables related to radiotherapy, adjusted OR and p-values were

estimated, controlling for chemotherapy (yes/no); for variables related to chemotherapy, the same parameters were estimated, controlling for local dose of radiation (categorized variable). To allow for possible synergistic effects of local radiotherapy and chemotherapy, we tested interactions. All confidence intervals (CI) and tests were 2-sided.

Radiation dosimetry

Radiotherapy data were obtained from technical radiotherapy records by hospital physicists. Individual doses were calculated with the homemade Dos_EG software package²²⁻²³. The local radiation dose was defined as the cumulative absorbed dose at the site of the SMDO for each case, and a similar site for its matched controls. Since dosimetric reconstruction was not possible for 3 controls, we considered their data as missing in multivariate analysis. To assess the effect of the radiation dose, the local dose was analyzed as a categorized variable (no radiotherapy, <9 Gy, 10-29 Gy, 30 Gy or more).

Chemotherapy measurement

Drugs were classified according to the following categories: epipodophyllotoxins, anthracyclines, alkylating agents, vinca alkaloids, antimetabolites and antibiotics. A detailed description of chemotherapy administered to this cohort has been previously published²⁴.

RESULTS

Cohort study

After 102 858 person-years and a median follow-up of 25 years (range, 2 to 63) the risk of a SMDO after initial childhood cancer was 9.7 times greater than that in the general population (95% CI: 7.0 to 12.8), with significantly increased risk of cancers of the stomach, liver, pancreas, colon and rectum (Table 1). The risk of SMDO varied with therapy. Chemotherapy alone and combined modality therapy were associated with a significantly increased risk of developing SMDO (SIR=9.1, 95% CI: 2.3 to 23.6; SIR=29.0, 95% CI: 20.5 to 39.8, respectively). Patients treated with radiotherapy alone had a SIR of 1.0 (CI, 0.2 to 3.0), which was not statistically significant.

The overall AER was 31.5 cases per 100 000 person-years of follow-up (95% CI: 21.0 to 44.7). When the time since diagnosis of the first cancer was taken into account, the SIR decreased ($p\text{-trend}<.001$). In contrast, the AER increased considerably ($p\text{-trend}<.001$) over time following the first cancer, from 2.5 additional cases annually per 100 000 persons between 2 to 10 years after diagnosis, to 116.2 additional cases 40 years or more thereafter (Figure 1).

Risk attributable to high radiation doses

In the cohort study, 889 patients (19.5%) had received an average radiation dose to the digestive organs of over 10 Gy, and 22 developed a SMDO. At 35 years or more after treatment, for patients who had received an average dose of less than 10 Gy to the digestive organs, there was a risk of having 126 new cases in excess each year

for 100 000 person-years of follow-up (95%CI; 41 to 263); among those who had received more than 10 Gy, the AER was multiplied by 5.8 (AER= 731, 95%CI 293 to 1 450).

Live style risk factors

Of the 1791 patients who sent back the questionnaire, 29% declared themselves as current regular smokers at time of questionnaire, this proportion being 33% in men and 26% in women. The average daily declared consumption of alcohol was 0.80 gram in men and 0.34 in women.

Because only 14 of the 41 cases of SMDO were observed in patients who fulfilled the questionnaire, we were not able to investigate the role of life style factors in the risk of SMDO.

Case-control study

In 58 cases, nephroblastoma (27.6%), Hodgkin's disease (25.9%) and soft tissue sarcoma (13.8%) were the most frequent FMN, whereas tumors of the colon (41.4%), esophagus and stomach (24.1%) were predominantly SMN. The median age at FMN was 5.4 years, and it was 33.2 years at diagnosis of the SMN (Table 2). The median interval between the first and second diagnoses was 23.5 years, with the shortest interval being for SMN in the pancreas (median 20.5 years) and the longest for SMN in the colon (median 27 years). Forty-seven cases (81%) and 115 controls (69%) received radiotherapy. The mean local dose was 18.1 Gy for cases (range 0-71) and 7.5 Gy for controls (range 0-57.5). In multivariate analysis, we included the local dose of radiation and drugs such as alkylating agents, vinca alkaloids and anthracyclines, which had been associated with a significantly increased OR in univariate analysis (Figure 2). When adjusted for chemotherapy, risk of a SMDO or SMDT was not significantly higher after radiotherapy (OR=1.8 and 1.6; 95% CI: 0.8 to

4.1 and 0.6 to 4.2, respectively), compared to those who had not received radiotherapy. When the local dose of radiation was taken into account, the risk increased sharply with increasing doses of radiation to the site of SMDO development ($p\text{-trend}<.001$) (Figure 3), and specifically for local doses attaining 10-29 Gy (OR=5.2; 95% CI: 1.7 to 16.0) and 30 Gy or more (OR=9.6; 95% CI: 2.6 to 35.2) (Figure 3). This risk was higher when SMDT was taken into account (OR=8.1 and 12.2; 95% CI: 1.6 to 40.2 and 2.1 to 71.5, respectively).

Thirty-nine cases (67%) and 80 controls (45%) had received chemotherapy. After adjusting for radiotherapy, exposure to chemotherapy increased the risk of a SMDO (OR=2.5; 95%CI: 1.04 to 5.8). No significant association was found between any of the drugs and risk of SMDO or SMDT when taking into account the radiation dose (Figure 3).

No significant interaction was found between drug categories (coded yes/no) and the local radiation dose.

Overall, in a linear relative risk model, each gray to the digestive organs increased the OR of SMDO of 13% (95%CI: 5% to 32%), this value being non significantly ($\chi^2=0.4$, $p=0.5$) different between men (OR=15%, 95%CI: 5% to 35%) and women (OR=8%, 95%CI: -1% to 44%).

DISCUSSION

Our French-UK cohort was at a 9.7-fold increased risk of developing a SMDO compared to the general French-British population. Despite a decrease in the SIR with time since follow-up, a strong increase in AER was observed during the last 40 years of follow-up. In a nested case-control study, we identified a dose-response

relationship where in the risk of developing a SMDO or SMDT increased with increasing local radiation doses. This risk was particularly high in patients who had received a radiation dose of 10 Gy or more to the digestive organs. Although chemotherapy was found to increase the risk of developing a SMDO or SMDT, we were unable to find a specific drug or drug category responsible for this increase.

The strong point of this study was that the histology of all cases was validated and the SMDO site considered in each case for the calculation of the local dose was similar to that of matched controls. A major limitation to our study was that we were unable to take into account potential confounding factors such as tobacco and alcohol consumption. Indeed, the risk of various cancers, including those of the upper aerodigestive tract, liver, stomach and colon/rectum, increases with tobacco and alcohol consumption, alone or in combination with dietary habits ²⁵⁻²⁷. However, data on tobacco and alcohol consumption was only available for French patients who completed the self-questionnaire (12 SMDO cases), mostly due to higher mortality for SMDO, 23 SMDO cases had died and thus had not filled in the questionnaire. Additionally, it has to be noted that childhood cancer survivors in UK²⁸ and in our cohort (data not shown) have a lower tobacco and alcohol consumption than the general population of their respective country.

Genetic factors have an established role in digestive cancers, in particular colorectal cancer ²⁹(ref). Even when adjusting for radiation dose to studied organs, genetic factors play also a role in second cancer risk following childhood cancer⁷(Kony) and in particular in colorectal as a second malignancy ³⁰(Rubino), Nevertheless we were not able to investigate these factors because this information was available for only 14 of the 58 SMDO.

Results of the cohort study must be compared to findings from the 3 major childhood survivor studies which provided information on long-term risk of SMDO: the Nordic population-based cohort of 47 697 5-year survivors followed for around 10 years found 123 SMDO ³¹; the British population-based cohort (BCCSS), which followed up 16 541 3-year survivors for 10 years, found 32 SMDO ⁸; and a CCSS study of 13 136 5-year survivors followed up for 15 years found 16 SMDO ¹⁶.

The long period of follow-up (25 years on an average) and the decreasing SIR suggest that the SIR of SMDO should have been lower in our cohort than in those of previous studies. However, the observed SIR=9.7 in our report was similar to that in the UK population-based cohort (BCCSS) (SIR=9.1) ⁸ and higher than those of the Nordic childhood (SIR=3.2) ³¹ and CCSS cohorts (SIR=5.0, excluding the colon and rectum) ¹⁶. These differences might be explained by different follow-up and therapeutic practices since, in hospital-based series like ours, which generally include patients with more extended tumors and more aggressive treatment, there exists a substantially greater risk of SMN than in population-based series ^{8, 31}.

Up until now, little detailed information has existed on time variations in SIR and AER for digestive cancers. A variation in the temporal pattern similar to ours (the SIR decreased and the AER increased with follow-up) has been observed in adult followed an average of 11 years after Hodgkin's disease ¹². However, the study of 5 925 subjects treated before the age of 21 years for Hodgkin's disease and followed 10.5 years on average, reported increasing SIR and AER which decreased after the age of 40, for all digestive SMN ³². These observations suggest that risk of SMDO in young adults is increasing and persists throughout the duration of follow up.

In our cohort study, increased risk was found for patients exposed to both radiotherapy and chemotherapy as well as for those treated only with chemotherapy.

Combined radiotherapy has been reported to significantly increase the risk of gastrointestinal cancer in studies on HD adolescents, young adults³³ and adults¹²⁻¹³. The CCSS study found that risk of gastrointestinal carcinomas (excluding the colon and rectum) after treatment for all cancers was significantly associated with chemotherapy (SIR=7.4) and radiotherapy (SIR=7.0)¹⁶. In contrast, several HD series did not observe any effect of radiotherapy^{12-13, 33} or chemotherapy^{12-13, 34}. However, treatment risk is difficult to compare and evaluate, since most reports did not provide detailed information concerning therapeutic exposure.

In our case-control study, we observed significantly increased risk of SMDO with local radiation dose. Interestingly, a similar finding was reported among atomic bomb survivors in Japan, whereas a statistically significant excess risk of cancer of the digestive system was 0.38 for 1 Sievert (95%CI: 0.25 to 0.52)¹⁵. However, a Nordic study which included 22 cases and 60 controls (16 cases and 42 controls were included in the present study) revealed a significantly increased risk of developing tumors of the digestive tract, including the oral cavity and pharynx, but only for doses of 30 Gy or more (RR=17.6; 95% CI: 2.1 to 148.4) compared to the risk in non-irradiated patients)¹⁹. In the French-UK cohort, survivors who had received over 10 Gy to the digestive organs during radiotherapy had 731 additional SMDO cases in excess annually per 100 000 person-years of observation 35 years or more after childhood treatment.

Although 71% of the SMDO cases were men, and only 29% women, we were not able to explain this difference. Nevertheless, it has to be noted that, although non-significantly, the OR per gray in men was almost 2 times the one in women. Men could be more radiosensitive than women, for various reasons including a higher

proportion of cofactors such as tobacco and alcohol, that we are unable to investigate in detail.

Although we observed an increased risk of developing SMDO after chemotherapy, the Nordic study did not show this risk increase, probably because of the small number of cases ¹⁹. Due to the frequency and heterogeneity of drug associations in our cohort, we were not able to adequately investigate the role of each drug or type of drug.

In conclusion, longer follow-up in this French-UK cohort showed that cancers of the digestive organs, usually observed in middle-aged adults and the elderly in a general population, occur at a much younger age after childhood cancer treatment and are likely to pose a serious problem for a growing number of long-term cancer survivors. Elucidating the role of treatments in this increase will require more detailed international pooled analyses.

Funding/Support: This study was supported by the Ligue Nationale Contre le Cancer (LNCC), the Programme Hospitalier de Recherche Clinique (PHRC), the Agence Française de Sécurité Sanitaire des Produits de la Santé (AFFSAPS), Electricité de France (EDF), the Wyeth Foundation for Childhood and Adolescent Health, and the Public Health Research Institute (IRESPI). Markhaba Tukenova is grateful to the Fondation de France and the Association for Cancer Research (ARC) for the grant. The authors are grateful to Jorgen H. Olsen. The authors are grateful to Ms. Lorna Saint Ange for editing, Martine Labbé for her help in data management, all the physicians and physicists who participated in the elaboration of the study or data collection at the Institut Gustave Roussy, the Thames Cancer Registry, the Institut Godinot, the Institut Curie, the Centre Regaud and the Centre Lacassagne. The authors have no conflicts of interest.

REFERENCES

1. Kingston JE, Hawkins MM, Draper GJ, Marsden HB, Kinnier Wilson LM. Patterns of multiple primary tumours in patients treated for cancer during childhood. *Br J Cancer*. Sep 1987;56(3):331-338.
2. Meadows AT, Baum E, Fossati-Bellani F, et al. Second malignant neoplasms in children: an update from the Late Effects Study Group. *J Clin Oncol*. Apr 1985;3(4):532-538.
3. Olsen JH, Garwicz S, Hertz H, et al. Second malignant neoplasms after cancer in childhood or adolescence. Nordic Society of Paediatric Haematology and Oncology Association of the Nordic Cancer Registries. *BMJ*. Oct 23 1993;307(6911):1030-1036.
4. de Vathaire F, Francois P, Hill C, et al. Role of radiotherapy and chemotherapy in the risk of second malignant neoplasms after cancer in childhood. *Br J Cancer*. May 1989;59(5):792-796.
5. Neglia JP, Friedman DL, Yasui Y, et al. Second malignant neoplasms in five-year survivors of childhood cancer: childhood cancer survivor study. *J Natl Cancer Inst*. Apr 18 2001;93(8):618-629.
6. Meadows AT. Second tumours. *Eur J Cancer*. Nov 2001;37(16):2074-2079; discussion 2079-2081.
7. Kony SJ, de Vathaire F, Chompret A, et al. Radiation and genetic factors in the risk of second malignant neoplasms after a first cancer in childhood. *Lancet*. Jul 12 1997;350(9071):91-95.
8. Jenkinson HC, Hawkins MM, Stiller CA, Winter DL, Marsden HB, Stevens MC. Long-term population-based risks of second malignant neoplasms after childhood cancer in Britain. *Br J Cancer*. Nov 29 2004;91(11):1905-1910.
9. Meadows AT, Friedman DL, Neglia JP, et al. Second neoplasms in survivors of childhood cancer: findings from the Childhood Cancer Survivor Study cohort. *J Clin Oncol*. May 10 2009;27(14):2356-2362.
10. de Vathaire F, Hawkins M, Campbell S, et al. Second malignant neoplasms after a first cancer in childhood: temporal pattern of risk according to type of treatment. *Br J Cancer*. Apr 1999;79(11-12):1884-1893.
11. Preston DL, Ron E, Tokuoka S, et al. Solid cancer incidence in atomic bomb survivors: 1958-1998. *Radiat Res*. Jul 2007;168(1):1-64.
12. Birdwell SH, Hancock SL, Varghese A, Cox RS, Hoppe RT. Gastrointestinal cancer after treatment of Hodgkin's disease. *Int J Radiat Oncol Biol Phys*. Jan 1 1997;37(1):67-73.
13. Swerdlow AJ, Barber JA, Hudson GV, et al. Risk of second malignancy after Hodgkin's disease in a collaborative British cohort: the relation to age at treatment. *J Clin Oncol*. Feb 2000;18(3):498-509.
14. Bhatia S, Yasui Y, Robison LL, et al. High risk of subsequent neoplasms continues with extended follow-up of childhood Hodgkin's disease: report from the Late Effects Study Group. *J Clin Oncol*. Dec 1 2003;21(23):4386-4394.
15. Thompson DE, Mabuchi K, Ron E, et al. Cancer incidence in atomic bomb survivors. Part II: Solid tumors, 1958-1987. *Radiat Res*. Feb 1994;137(2 Suppl):S17-67.
16. Bassal M, Mertens AC, Taylor L, et al. Risk of selected subsequent carcinomas in survivors of childhood cancer: a report from the Childhood Cancer Survivor Study. *J Clin Oncol*. Jan 20 2006;24(3):476-483.

17. Hawkins MM, Swerdlow AJ. Completeness of cancer and death follow-up obtained through the National Health Service Central Register for England and Wales. *Br J Cancer*. Aug 1992;66(2):408-413.
18. Hawkins MM, Lancashire ER, Winter DL, et al. The British Childhood Cancer Survivor Study: Objectives, methods, population structure, response rates and initial descriptive information. *Pediatr Blood Cancer*. May 2008;50(5):1018-1025.
19. Svahn-Tapper G, Garwicz S, Anderson H, et al. Radiation dose and relapse are predictors for development of second malignant solid tumors after cancer in childhood and adolescence: a population-based case-control study in the five Nordic countries. *Acta Oncol*. 2006;45(4):438-448.
20. Garwicz S, Anderson H, Olsen JH, et al. Second malignant neoplasms after cancer in childhood and adolescence: a population-based case-control study in the 5 Nordic countries. The Nordic Society for Pediatric Hematology and Oncology. The Association of the Nordic Cancer Registries. *Int J Cancer*. Nov 15 2000;88(4):672-678.
21. Breslow NE, Day NE. Statistical methods in cancer research. Volume I - The analysis of case-control studies. *IARC Sci Publ*. 1980(32):5-338.
22. Diallo I, Lamon A, Shamsaldin A, Grimaud E, de Vathaire F, Chavaudra J. Estimation of the radiation dose delivered to any point outside the target volume per patient treated with external beam radiotherapy. *Radiother Oncol*. Mar 1996;38(3):269-271.
23. Shamsaldin A, Grimaud E, Hardiman C, Diallo I, de-Vathaire F, Chavaudra J. Dose distribution throughout the body from radiotherapy for Hodgkin's disease in childhood. *Radiother Oncol*. Oct 1998;49(1):85-90.
24. Guerin S, Guibout C, Shamsaldin A, et al. Concomitant chemo-radiotherapy and local dose of radiation as risk factors for second malignant neoplasms after solid cancer in childhood: a case-control study. *Int J Cancer*. Jan 1 2007;120(1):96-102.
25. Pelucchi C, Gallus S, Garavello W, Bosetti C, La Vecchia C. Cancer risk associated with alcohol and tobacco use: focus on upper aero-digestive tract and liver. *Alcohol Res Health*. 2006;29(3):193-198.
26. Fan Y, Yuan JM, Wang R, Gao YT, Yu MC. Alcohol, tobacco, and diet in relation to esophageal cancer: the Shanghai Cohort Study. *Nutr Cancer*. 2008;60(3):354-363.
27. Sumathi B, Ramalingam S, Navaneethan U, Jayanthi V. Risk factors for gastric cancer in South India. *Singapore Med J*. Feb 2009;50(2):147-151.
28. Frobisher C, Lancashire ER, Reulen RC, Winter DL, Stevens MC, Hawkins MM. Extent of alcohol consumption among adult survivors of childhood cancer: the British Childhood Cancer Survivor Study. *Cancer Epidemiol Biomarkers Prev*. May 2010;19(5):1174-1184.
29. Gylfe AE, Sirkia J, Ahlsten M, et al. Somatic mutations and germline sequence variants in patients with familial colorectal cancer. *Int J Cancer*. Jun 29 2010.
30. Rubino C, Adjadj E, Doyon F, et al. Radiation exposure and familial aggregation of cancers as risk factors for colorectal cancer after radioiodine treatment for thyroid carcinoma. *Int J Radiat Oncol Biol Phys*. Jul 15 2005;62(4):1084-1089.
31. Olsen JH, Moller T, Anderson H, et al. Lifelong cancer incidence in 47,697 patients treated for childhood cancer in the Nordic countries. *J Natl Cancer Inst*. Jun 3 2009;101(11):806-813.
32. Metayer C, Lynch CF, Clarke EA, et al. Second cancers among long-term survivors of Hodgkin's disease diagnosed in childhood and adolescence. *J Clin Oncol*. Jun 2000;18(12):2435-2443.

33. van Leeuwen FE, Klokman WJ, Veer MB, et al. Long-term risk of second malignancy in survivors of Hodgkin's disease treated during adolescence or young adulthood. *J Clin Oncol.* Feb 2000;18(3):487-497.
34. Foss Abrahamsen A, Andersen A, Nome O, et al. Long-term risk of second malignancy after treatment of Hodgkin's disease: the influence of treatment, age and follow-up time. *Ann Oncol.* Nov 2002;13(11):1786-1791.

Figure legends

Figure 1.

* Medical follow-up

Figure 2.

* Observed/Expected

Figure 3

*Multivariate model adjusting to type of first cancer diagnosis. For variables related to radiotherapy, the adjusted OR and p-value estimated controlling for chemotherapy (yes/no). For variables related to chemotherapy, the adjusted and p-value were estimated controlling for local radiation dose (categorized variable).

Table 1. SMDO cancer risk in 4 568 2-year survivors of a childhood cancer in France-UK cohort according to therapy.

Second malignant neoplasms (Sites)			Standardized incidence ratio	Annual excess risk /100 000 persons
	Observed	Expected	(95% CI)	
All	42	4.40	9.7(7.0-12.8)	31.5(21.0-44.7)
Oesophagus	1	0.51	2.0(0.1-8.6)	0.9(0.1-4.2)
Stomach	8	0.61	13.2 (6.0-24.5)	6.7(2.7-13.4)
Pancreas	4	0.40	9.9(3.1-23.1)	3.3(0.7-8.4)
Liver	10	0.40	25.3(12.7-44.3)	8.7(3.9-16.0)
Colon and rectum	19	2.62	7.2(4.4-10.9)	12.3(5.9-21.3)
Therapy for all cases				
None	2	0.78	2.6(0.4-7.9)	
Chemotherapy (alone)	3	0.33	9.1(2.3-23.6)	
Radiotherapy (alone)	2	2.07	1.0(0.2-3.0)	
Combined modality therapy	35	1.21	29.0(20.5-39.8)	

95% Confidence Interval.

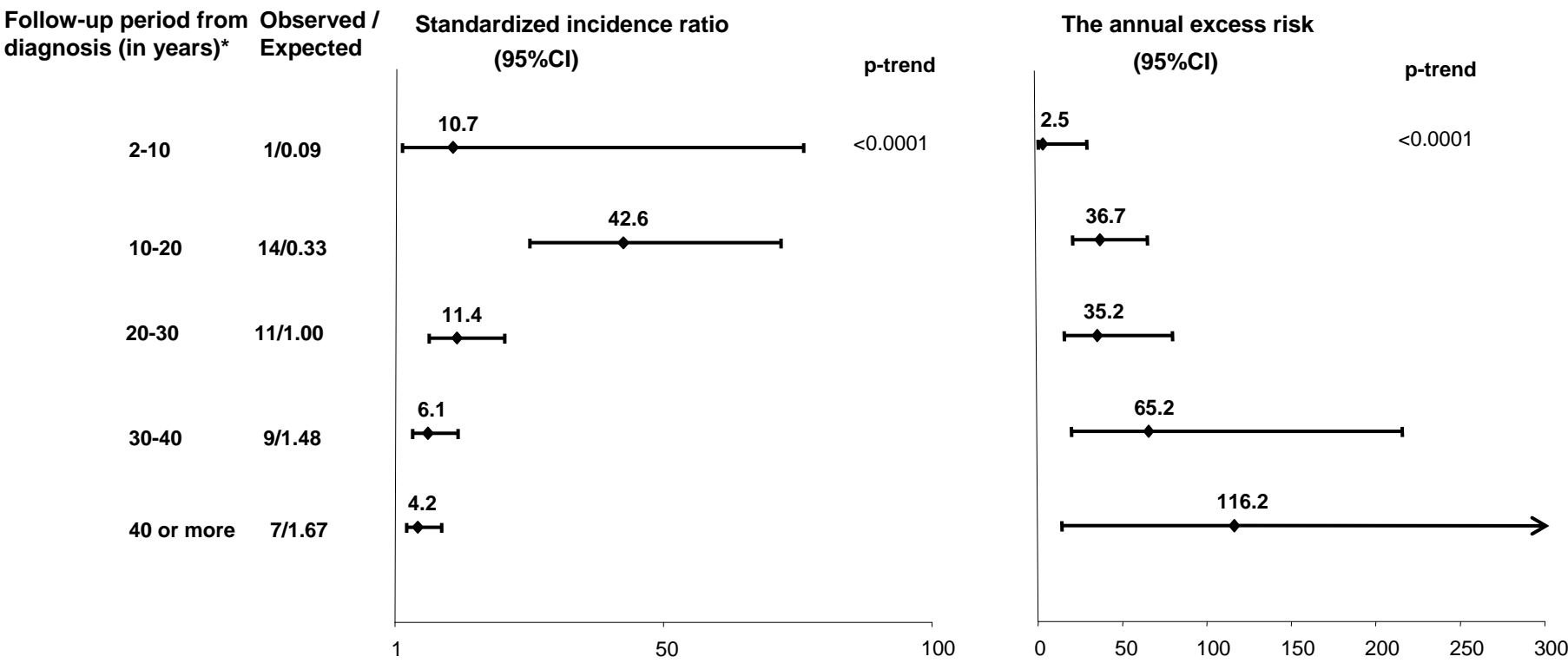
Table 2. Characteristics of cases according to SMDO site.

Characteristics of cases	All SMN	Liver	Esophagus	Stomach	Colon	Pancreas	Digestive tract unspecified
Cohort n (%)							
France / UK	42	10 (23.8)	1(2.4)	7 (16.6)	19 (45.3)	4 (9.5)	1 (2.4)
Nordic countries	16		3(18.75)	3 (18.75)	8 (50.0)	2 (12.5)	
Sex ¹ n (%)							
Male	41(71)	10 (100)	4 (100)	8 (80)	14 (52)	5 (83)	
Female	17 (29)	0	0	2 (20)	13 (48)	1 (17)	1 (100)
Age at diagnosis of the first cancer ¹ (median, range)	6.5 (0-19)	4.5 (0-14)	14.0 (0-19)	11.5 (1-19)	9.0 (0-19)	7.5 (1-16)	3.0
Age at diagnosis of the second cancer (median, range)	32.0 (11-59)	31.0 (18-50)	37.0 (28-47)	28.0 (18-48)	37.0 (15-59)	29.5 (11-48)	40.1
Year of treatment of the first cancer ¹ (mean, range)	1969 (1946-1985)	1970 (1952-1984)	1967 (1962-1971)	1979 (1955-1985)	1969 (1946-1982)	1971 (1963-1980)	1971
Year of diagnosis of the second cancer (median, range)	1994 (1977-2007)	1996 (1986-2003)	1991 (1990-1998)	1993 (1978-2005)	1996 (1977-2005)	1995 (1982-2003)	2007
Latency period between 1st and 2nd cancer ¹ (median years, range)	23.5 (2-49)	22.5 (13-49)	25.0 (23-28)	17.0 (2-45)	27.0 (5-46)	20.5 (9-38)	36.0
Local dose of radiation received at the site of second cancer ² (mean Gy)	16.3 (0-71.0)	17.4 (0.1-71.0)	42.0 (30.8-48.2)	21.2 (0-45.6)	4.7 (0-42.6)	28.5 (0.3-38.2)	44.3

¹Matching variable

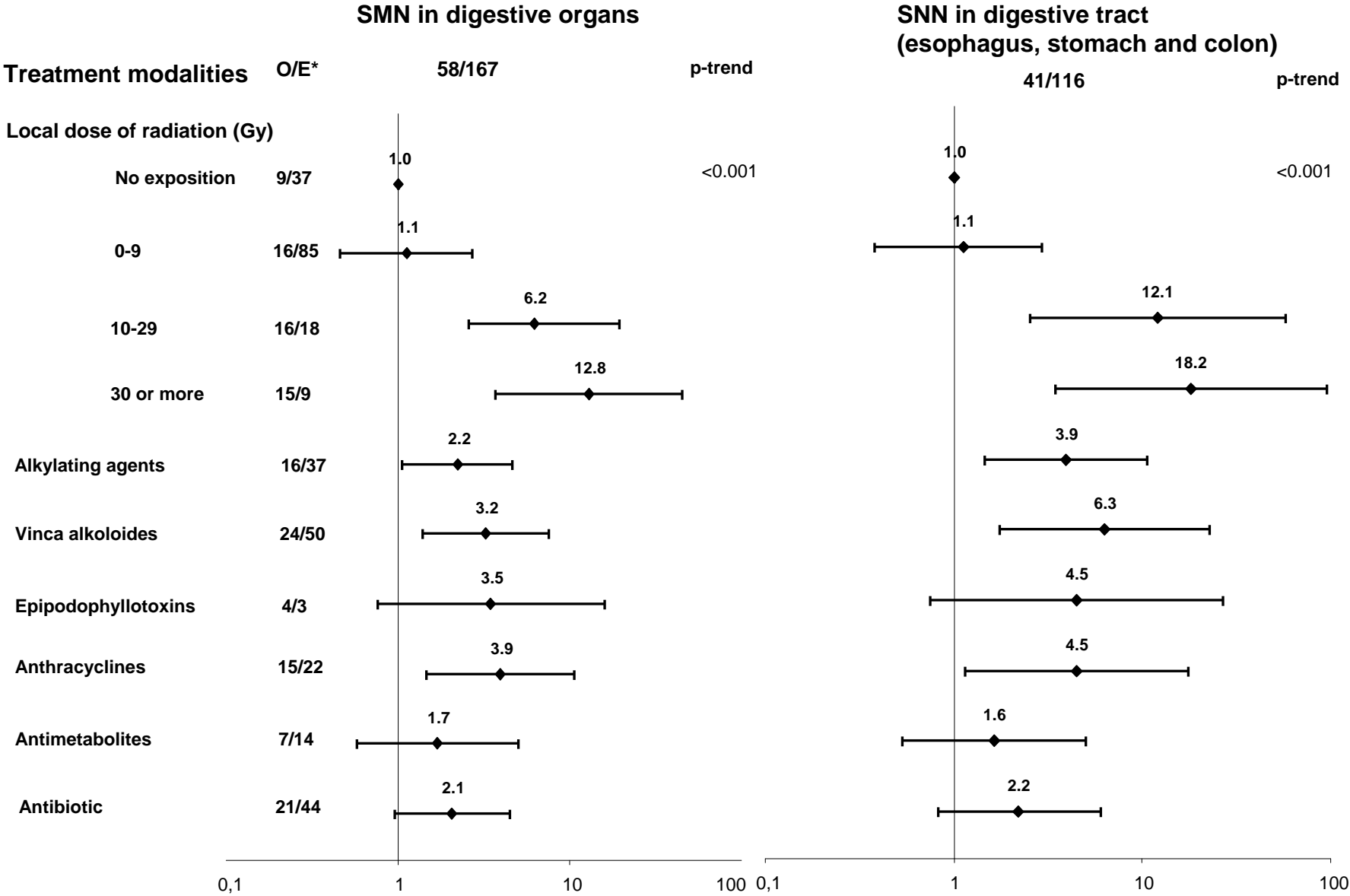
²For patients who received radiotherapy

Figure 1. Temporal trend of SMDO in France-UK cohort according to follow-up



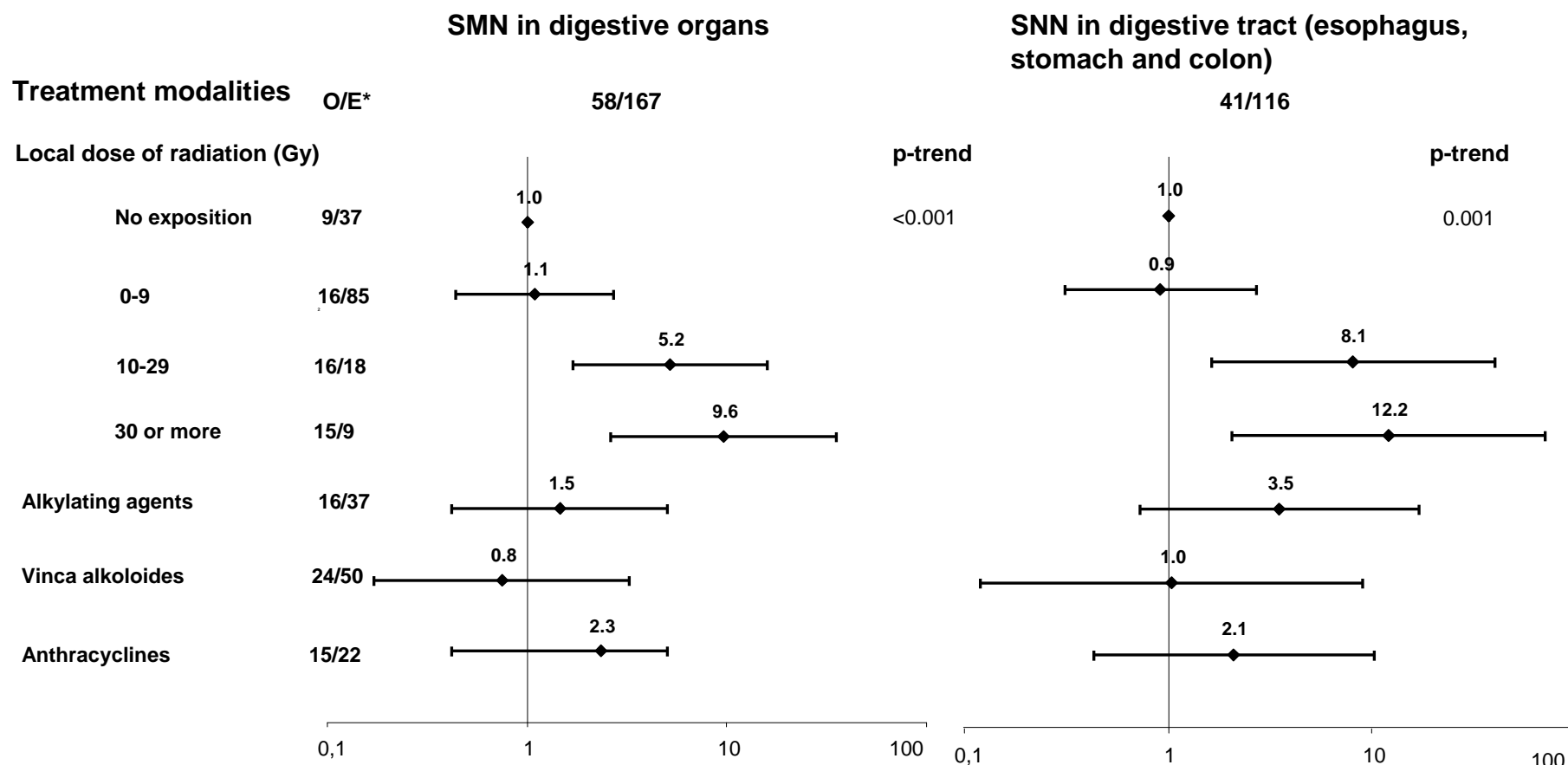
* Medical follow-up

Figure 2. Odds Ratio of SMN in digestive organs and digestive tract with exposure to different treatment modalities. Univariate analysis.



* Observed/Expected

Figure 3. Odds Ratio of SMN in digestive organs and digestive tract with exposure to different treatment modalities. Multivariate analysis.



*Multivariate model adjusting to type of first cancer diagnosis. For variables related to radiotherapy, the adjusted OR and p-value estimated controlling for chemotherapy (yes/no).

For variables related to chemotherapy, the adjusted and p-value were estimated controlling for local radiation dose (categorized variable).