



# LUND UNIVERSITY

## MOLECULAR PROFILING OF UROTHELIAL CARCINOMA

Lindgren, David

2006

[Link to publication](#)

*Citation for published version (APA):*

Lindgren, D. (2006). *MOLECULAR PROFILING OF UROTHELIAL CARCINOMA*. [Doctoral Thesis (compilation), Division of Clinical Genetics]. Division of Clinical Genetics, Lund University.

*Total number of authors:*

1

### General rights

Unless other specific re-use rights are stated the following general rights apply:

Copyright and moral rights for the publications made accessible in the public portal are retained by the authors and/or other copyright owners and it is a condition of accessing publications that users recognise and abide by the legal requirements associated with these rights.

- Users may download and print one copy of any publication from the public portal for the purpose of private study or research.
- You may not further distribute the material or use it for any profit-making activity or commercial gain
- You may freely distribute the URL identifying the publication in the public portal

Read more about Creative commons licenses: <https://creativecommons.org/licenses/>

### Take down policy

If you believe that this document breaches copyright please contact us providing details, and we will remove access to the work immediately and investigate your claim.

LUND UNIVERSITY

PO Box 117  
221 00 Lund  
+46 46-222 00 00

MOLECULAR PROFILING OF  
UROTHELIAL CARCINOMA

DAVID LINDGREN

---

DEPARTMENT OF CLINICAL GENETICS

LUND UNIVERSITY

2006

ISBN 91-85559-27-X

© DAVID LINDGREN

PRINTED IN SWEDEN 2006 BY MEDIA-TRYCK, LUND

# TABLE OF CONTENTS

TABLE OF CONTENTS.....	3
ORIGINAL ARTICLES.....	4
ABBREVIATIONS.....	5
PREFACE .....	6
INTRODUCTION.....	7
Urothelial Carcinoma .....	7
Tumor Pathology and Clinical Manifestation.....	7
Genetic Changes in Urothelial Carcinomas.....	9
Gene Expression Profiling.....	10
Methodological Principles.....	10
Analysis of Microarray Data .....	12
THE PRESENT STUDY .....	15
Specific Aims .....	15
Materials and Methods .....	17
Patients and Tissues.....	17
Gene Expression Profiling.....	17
Unsupervised Analyses of Gene Expression Patterns .....	17
Supervised Analyses .....	19
Biological Interpretation .....	19
Array-based CGH.....	19
Mutation Screening .....	20
LOH Analysis.....	20
Results and Discussion .....	21
ARTICLE I and ARTICLE II.....	21
ARTICLE III .....	24
ARTICLE IV .....	25
REVIEWS.....	27
Molecular Alterations in Urothelial Carcinoma.....	27
Recurrent Chromosomal and Genetic Changes .....	27
FGFR3 .....	29
TP53.....	33
Molecular Pathways in UC Development .....	34
Tumor Clonality and Tumor Spread.....	36
Gene Expression Profiling of Urothelial Carcinomas.....	38
Gene Expression Patterns and Tumor Histopathology .....	38
Gene Expression in <i>FGFR3</i> and <i>TP53</i> Mutated Tumors .....	40
Prediction of Disease Recurrence and Progression.....	41
Superficial Tumor Recurrence .....	41
Progression of Superficial Tumors.....	41
Progression of Muscle-Invasive Disease and Overall Survival .....	42
Normal and Morphologically Altered Bladder Mucosa.....	44
Multifocal and Recurrent Tumors .....	44
Concluding Remarks .....	45
CONCLUSIONS .....	46
SUMMARY IN SWEDISH.....	47
ACKNOWLEDGEMENTS .....	50
REFERENCES .....	52

---

## ORIGINAL ARTICLES

This thesis is based on the below listed original articles, referred to in the text by their Roman numerals (I-IV):

- I. Lindgren D, Liedberg F, Andersson A, Chebil G, Gudjonsson S, Borg Å, Månsson W, Fioretos T, Höglund M. Molecular characterization of early-stage bladder carcinomas by expression profiles, FGFR3 mutation status, and loss of 9q. *Oncogene*. 2006 Apr 27;25(18):2685-96.
- II. Lindgren D, Liedberg F, Bendahl PO, Andersson A, Aits S, Frigyesi A, Veerla S, Lövgren K, Chebil G, Gudjonsson S, Borg Å, Fernö M, Fioretos T, Månsson W, Höglund M. Bladder carcinoma expression profiles associated with *FGFR3/TP53* mutation status and a MHC class I gene signature that predicts lymph node metastasis and survival. *Manuscript*
- III. Lindgren D, Gudjonsson S, Ja Jee K, Liedberg F, Aits S, Andersson A, Chebil G, Borg Å, Knuutila S, Fioretos T, Månsson W, Höglund M. Recurrent and multiple bladder tumors show conserved expression profiles regardless of genomic differences; evidence for establishment of a gene expression profile as a primary event. *Manuscript*
- IV. Heidenblad M, Lindgren D, Jonson T, Liedberg F, Chebil G, Gudjonsson S, Borg Å, Månsson W, Höglund M. Combined high-density genomic and expression profiling of urothelial carcinomas delineate amplification target genes in 6p22 and 8q22, specific for advanced tumors, and identify novel homozygous deletions on chromosome 9. *Manuscript*.

---

## ABBREVIATIONS

ACH	Achondroplasia
ANN	Artificial neural network
APM	Antigen presenting machinery
aRNA	Antisense RNA
BAC	Bacterial artificial chromosome
BCG	Bacillus Calmette-Guérin
cDNA	Complementary DNA
CGH	Comparative genomic hybridization
COA	Correspondence analysis
cT	Tumor clinical stage
CV	Cross validation
ECM	Extracellular matrix
FDR	False discovery rate
FGF	Fibroblast growth factor
FGFR	Fibroblast growth factor receptor
FNR	False negative rate
FISH	Fluorescence <i>in situ</i> hybridization
GO	Gene ontology
HCA	Hierarchical clustering analysis
HCH	Hypochondroplasia
IHC	Immunohistochemistry
<i>k</i> -NN	<i>k</i> -nearest neighbor
LOH	Loss of heterozygosity
MDS	Multidimensional scaling
MHC	Major histocompatibility complex
mut	Amino acid changing sequence mutation
mRNA	Messenger RNA
PAM	Prediction analysis of microarray
PCA	Principal component analysis
PCR	Polymerase chain reaction
SAM	Significance analysis of microarrays
SVM	Support vector machines
SNP	Single nucleotide polymorphism
pT	Tumor histopathological stage
PCA	Principle component analysis
QT clust	Quality cluster algorithm
UC	Urothelial carcinoma
SADDAN	Severe hypochondroplasia with developmental delay and acanthosis nigricans
TD	Thanatophoric dysplasia
wt	Wild type

## PREFACE

Urothelial carcinoma (UC) is a heterogeneous disease ranging from low grade papillary tumors with a clinically benign disease course to poorly differentiated invasive lesions associated with an unfavorable prognosis. Although a number of recurrent genetic alterations have been found in bladder cancer, the molecular events underlying bladder cancer development and progression are still largely unknown. It is therefore of importance to further characterize UC to increase the biological understanding of the disease. Moreover, biomarkers with improved prognostic potential are needed since current clinical parameters are insufficient in predicting outcome for the individual patient.

The general aim of this thesis was to molecularly characterize UC at the transcriptional level using gene expression microarrays. This thesis is divided into four major sections. The first section includes a brief introduction to bladder cancer and an introduction to the microarray technology, which is the key methodology used. In the second part, the specific aims of the thesis, a summary of materials and methods, and the results are given with a short discussion. In the third section, two reviews on molecular changes in UC are given, where the results from the present study are included and discussed in relation to previous investigations. The fourth and final section contains the original articles (I-IV) on which this thesis is based.

Lund, August 2006

---

# INTRODUCTION

## UROTHELIAL CARCINOMA

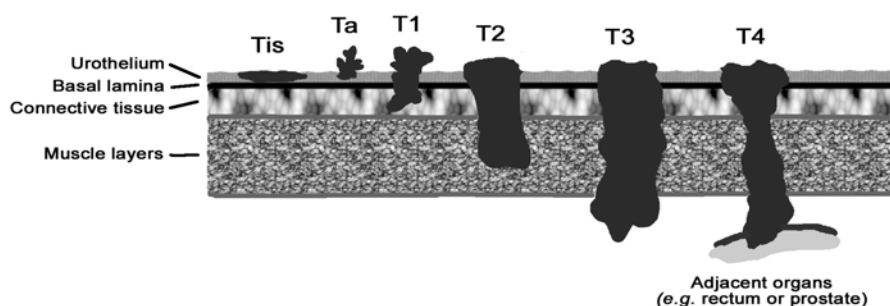
Bladder cancer is the fifth most common malignancy in men after prostate, skin, lung, and colon cancer and show a male to female ratio of approximately 3:1.<sup>1</sup> There are around 2000 new cases in Sweden each year and the disease only rarely affects individuals younger than 30 years; roughly 85% of all newly diagnosed bladder cancer patients in Sweden 2004 were 60 years or older.<sup>1</sup> Bladder tumors are almost exclusively of epithelial origin, and in the industrialized countries more than 90% are of the urothelial carcinoma type (UC).

### **Tumor Pathology and Clinical Manifestation**

Urothelial carcinomas arise in the urothelium which is the epithelial cell layer lining the urinary bladder. Pathologically, UC is grouped into different tumor stages according to the depth of tumor invasion (Figure 1) and into different grades based on the morphological differentiation.<sup>2,3</sup> Ta tumors are exophytically growing papillary tumors which are strictly confined to the epithelial mucosa. Carcinoma in situ (Tis), also superficially confined, is a flat lesion composed of poorly differentiated cells (grade 3; G3). Tumors which have spread through the basal lamina and into the underlying connective tissue layer are termed stage 1 (T1). A subsequent invasion into, and beyond, the muscle layers is collectively termed muscle-invasion. Of these, stage 2 tumors (T2) are organ confined, *i.e.*, have not extended further than the muscle layers, whereas the non-organ confined stages have grown through and extended into



the perivesical tissue (stage 3; T3) or into adjacent organs such as the prostate or the abdominal wall (stage 4; T4). Most T2 to T4 tumors are non-papillary growing, of high grade, and present without any history of papillary low grade tumors.<sup>3</sup> Furthermore, these tumors are often associated with concomitant fields of dysplastic urothelium or Tis.<sup>3</sup>



**Figure 1:** Histological staging of UC.

Approximately 75% of patients with UC present with a non muscle-invasive disease (stages Ta, T1, or Tis), and of these, the majority is Ta tumors of low to medium grade.<sup>3-5</sup> A characteristic of UC is the high frequency of tumor recurrence (metachronous tumors); more than half of the patients with Ta tumors show tumor recurrences.<sup>5,6</sup> Despite the high recurrence rate, the disease course for many of these patients is highly favorable, and only a minority develop a subsequent muscle-invasive disease.<sup>5,6</sup> Non muscle-invasive tumors are mainly managed by transurethral resection or fulguration of visible tumor growth.<sup>7</sup> However, in the presence of adverse prognostic signs, such as high grade disease, large or multiple (synchronous) tumors, or concomitant Tis,<sup>8-10</sup> intravesical therapy, such as Bacillus Calmette-Guérin (BCG), are often administered and have been shown to significantly improve patient prognosis.<sup>11</sup> Stage Ta, T1, and Tis tumors are often collectively termed as superficial tumors.<sup>12</sup> However, in contrast to low and moderately differentiated Ta tumors, high grade Ta, T1, and Tis lesions are associated with a much adverse

prognosis.<sup>8,12-14</sup> Hence, due to the heterogeneity in clinical outcome within this group, the term superficial should be used with care.<sup>12</sup>

Muscle invasive tumors are highly malignant and if left without aggressive therapeutic management, the majority of patients die of the disease within a few years from initial diagnosis.<sup>15</sup> The current standard treatment for muscle invasive tumors is radical cystectomy, *i.e.*, removal of the urinary bladder, or less commonly, radiation therapy.<sup>16</sup> The survival after cystectomy is mainly influenced by lymph node status and histopathological tumor stage. The 10-year recurrence free survival for organ confined lymph node negative disease is 80% after cystectomy, in contrast to 30% for lymph node positive T3 and T4 tumors.<sup>17</sup>

In UC, individual patient disease course is unpredictable and conventional prognostic factors such as tumor grade/stage, size, and multiplicity, do not sufficiently predict clinical outcome.<sup>8,9</sup> Even the clinically benign group of Ta tumors requires close follow-up with check-up cystoscopies; examinations that affect patient's quality of life and are costly. Therefore, an improved understanding of the molecular changes that characterize UC is important. In particular, it is of importance to identify molecular markers that define subgroups of patients who may benefit from either less or more intensive treatment modalities, as well as molecular networks that can serve as targets for the development of novel drugs or treatment strategies.

### **Genetic Changes in Urothelial Carcinomas**

Numerous molecular studies of UC have been performed over the years, identifying several recurrent genetic changes.<sup>18,19</sup> For example, molecular and conventional cytogenetic studies have revealed loss of chromosome 9 as the most characteristic karyotypic change in UC. Moreover, oncogenic activation of *FGFR3* or *RAS* gene family members, or inactivation of known tumor

---

suppressor genes such as *TP53* and *CDKN2A* are frequently seen. A more detailed summary of these characteristic alterations together with the findings obtained in the present study will be presented in the review-section of this thesis.

## **GENE EXPRESSION PROFILING**

### **Methodological Principles**

Large scale gene expression analyses have during recent years become an appreciated method for exploring molecular characteristics of a wide variety of biological states and conditions. Gene expression profiling, a term collectively used for techniques which simultaneously measures transcript levels of a large number of genes, was first described in 1991 by Lennon and Lehrach<sup>20</sup> who let radiation-labeled targets hybridize to filter-arrays spotted with cDNA clones. These array-based techniques provided a huge advantage compared to previously used approaches, such as Northern blot<sup>21</sup> and PCR-based methods, which only could monitor the expression of single genes. In 1995, Schena *et al.*<sup>22</sup> successfully showed that the technique could be significantly improved by printing cDNA clones on glass slides and by hybridizing fluorescently labeled cDNA targets. Shortly thereafter, the first gene expression study using this technique on a human malignancy was published, studying the expression levels of 1000 genes in a melanoma cell line.<sup>23</sup> Currently, a variety of different settings are available for array-based expression profiling providing a probe density per array of hundreds of thousands of elements. Hence, gene expression profiling may be performed on a large scale and, at least theoretically, cover the complete transcriptome.

Gene expression analysis using microarray technology relies on the nature of single stranded DNA to base pair with its complementary sequence.<sup>24</sup>

In practice, a large number of probes, each representing a part of a gene, are immobilized on chemically modified glass slides using robotic arrayers. The probes used are typically cDNA clones of 500-3000 base pairs or *in vitro*-synthesized oligomers of 70-80 bases.<sup>25-28</sup> Alternatively, the commercially available Affymetrix GeneChips rely on fabrication of small oligonucleotide sequences directly on a chip, providing a much higher density than for printed glass arrays.<sup>29</sup>

Microarray experiments using cDNA or oligonucleotide probes printed on glass slides basically use the same methodological principle. In short, differentially labeled targets, derived from RNA samples from *e.g.*, tumor and a common reference sample, are hybridized to a glass slide containing the probes.<sup>25-27</sup> Most commonly, the labeling reaction is performed by reverse transcription of the RNA samples with the simultaneous incorporation of fluorescent dyes. Typically, the tumor sample is labeled with Cy3 and the reference sample is labeled with Cy5. The differentially labeled cDNA targets, are purified, pooled, and subsequently incubated on the probe containing microarray slide. Hybridized slides are thereafter washed in solutions of increasing stringency to promote disassociation of mismatched target-probe heteroduplexes. Subsequently, target hybridization signals are quantified in a high-resolution laser scanner by excitation of the fluorescent dyes and detection of the emitted light. The scanner images are thereafter analyzed using image analysis software. The competitive hybridization between the tumor and reference targets will reflect the abundance of the specific targets and thus, for each probe present on the array, a relative expression ratio between the tumor and reference sample is obtained.<sup>25-27</sup>

A common problem with microarray analysis is that large amounts of RNA are needed for efficient hybridization. Many biological samples are small and therefore it may be difficult to obtain enough RNA for analysis. To overcome this problem, RNA amplification has become a widely accepted

method to obtain sufficient material for hybridization. Most commonly, this is performed by utilizing the T7 RNA polymerase promoter for *in vitro* transcription of antisense RNA (aRNA).<sup>30,31</sup>

### **Analysis of Microarray Data**

After collection of primary data, the expression values must be normalized to adjust for methodological biases, *e.g.*, for variation in the quantity of initial RNA input and for differences in the detection efficiencies of the fluorescent dyes.<sup>32,33</sup> In its simplest way, this may be performed by using total intensity normalization, which rescales the two channels so that the total quantity of hybridization for each channel is the same.<sup>32</sup> However, since the measured intensities often are non-linear, regression methods such as the LOWESS are more appropriate.<sup>32-34</sup> Following normalization, the expression ratio, typically the  $\log_2$  of the tumor intensity divided by the reference sample, is calculated. Hence, a gene twice as abundant in the tumor sample as compared to the reference sample will have an expression value of 1, whereas a gene half as abundant will have an expression value of -1.

Each microarray hybridization generates gene expression values for thousands of genes, and a multitude of statistical analysis methods for interpretation and comparisons of data have been described. Basically, two different main approaches exist, *unsupervised* and *supervised* analyses.<sup>32</sup> Unsupervised methods involve exploration of the gene expression profiles without the use of any *a priori* knowledge and are thus suitable for *i.e.*, the identification of subgroups based on their gene expression, or covarying genes of possible biological relevance. The perhaps most commonly used method is hierarchical clustering analysis (HCA) in which a hierarchical dendrogram is constructed, reflecting the similarities in expression profiles between samples and/or genes.<sup>35</sup> The HCA is often presented as a so called heatmap; a chart in

which genes, color coded according to their relative expression, are ordered horizontally and samples are ordered vertically. Apart from HCA, grouping of genes expressed in a similar fashion across experiments may be performed using other algorithms, such as  $k$ -means clustering<sup>36</sup> or the quality cluster algorithm (QT clust).<sup>37</sup> Multidimensional scaling (MDS),<sup>38</sup> principal component analysis (PCA),<sup>39</sup> and correspondence analysis (COA)<sup>40</sup> are other ways to explore and visualize global gene expression similarities between samples. In these methods, the expression data are reduced into two- or three-dimensional subspaces with as little loss of information as possible.

Supervised methods aim to identify gene signatures specific for pre-defined groups, *e.g.*, distinct histological subtypes or groups with different clinical outcome. Such class comparisons are often performed on a gene-by-gene basis using standard statistical methods such as student's t-test and Mann Whitney U-test, or related methods such as significance analysis of microarrays (SAM),<sup>41</sup> specifically developed for the application of microarray data. However, since the number of genes tested greatly exceed the number of samples, it is vital to take the multiple statistical testing problem into consideration; a good compromise between the false discovery rate (FDR) and the false negative rate (FNR) is needed, *i.e.*, it is important to keep the number of falsely identified genes to a minimum while not discarding too many true positive genes.<sup>42</sup> More refined statistical strategies are often applied for the identification of gene signatures that may be used for classification of unknown samples into predefined groups. Common discriminatory techniques are support vector machines (SVM),<sup>43</sup> artificial neural networks (ANN),<sup>44</sup> or prediction analysis of microarray (PAM).<sup>45</sup>

An important aspect of microarray analysis is the biologic interpretation of the data. Often, relatively large gene lists of coexpressed genes or gene signatures specific for tumor subtypes are identified. Because of confounding factors, such as the multiple testing problem or methodological biases, each

gene list is likely to include false positive genes, and therefore biologic interpretations relying on single genes have to be made with caution. Furthermore, for a large gene list it is easy to focus only on well-known genes and thereby miss important but less well characterized genes. One way of exploring the biologic properties of an isolated gene cluster is to use annotation systems in which genes have been systematically ordered into groups based on their specific characteristics, *e.g.*, cellular function or location. Such annotations are provided by, for example, the Gene Ontology (GO) consortium (<http://www.geneontology.org/>) or the KEGG database (<http://www.genome.jp/kegg/>). One advantage of grouping genes into classes with biological relevance is the possibility of calculating a statistical measure of enrichment within a given list of genes, thereby providing a highly useful way of biologic interpretation.

---

## THE PRESENT STUDY

In this section, the major aims of this thesis are presented followed by a summary of the patient material and the methods used. Thereafter, a short summary and discussion of the obtained results are given.

### SPECIFIC AIMS

The general aim of this thesis was to explore transcriptional events associated with bladder cancer development and progression using gene expression microarrays. More specifically, the aims were:

- to establish gene expression profiles of a large series of bladder tumors, representing all histological stages and to investigate possible transcriptional events associated with tumor histopathology and morphology (ARTICLES I and II),
- to correlate expression data with molecular alterations that previously have been shown to be frequent in UC, such as *FGFR3* and *TP53* mutation status, and allelic loss on chromosome 9. With this data, the aim was to establish a more refined view of the molecular alterations characteristic for UC (ARTICLES I and II),
- to identify gene signatures associated with tumor recurrence in superficial tumors (ARTICLE I) and the presence of lymph node metastasis in patients submitted to radical cystectomy (ARTICLE II),



- 
- to gain an insight into the development of syn- and metachronous UC using a combined analysis of gene expression patterns, genomic copy number profiles, LOH analysis for chromosome 9, and *FGFR3/TP53* mutation status (ARTICLE III),
  - to perform a high-resolution screening for target oncogenes in UC using genomic copy-number profiles overlaid with expression data (ARTICLE IV).

---

## MATERIALS AND METHODS

### Patients and Tissues

The present study comprises a total of 190 urothelial tumor samples collected from 163 patients undergoing transurethral resection at the University Hospital of Lund, Sweden. The studies were approved by the Research Ethics Committee of Lund University and informed consent was obtained in all cases. Samples were collected by cold-cup biopsies from the exophytic part of the bladder tumor. Histopathological staging and grading were reviewed according to the 2002 TNM<sup>46</sup> and 1999 WHO<sup>47</sup> classification systems by one single pathologist.

### Gene Expression Profiling

Two different microarray platforms were used in the four articles included in this thesis. In ARTICLE I, a cDNA array spotted with 25,648 cDNA clones corresponding to 11,592 unique genes was used. In ARTICLES II and IV the expression analyses were performed on oligonucleotide arrays printed with 36,288 70-mers from the OPERON v 3.0 set corresponding to 18,466 unique genes. ARTICLE III included samples hybridized to both platforms. All arrays were obtained from the Swegene DNA microarray resource centre at Lund University.

### *Unsupervised Analyses of Gene Expression Patterns*

Tumor-tumor associations based on gene expression profiles were visualized by HCA (ARTICLE I-III), MDS (ARTICLE I), and COA (ARTICLE II). HCA is perhaps the most commonly used method to visualize microarray data. It is, however, important to note that different distance measures and clustering methods, as well as filtering and normalization methods will influence the

---

clusters formed. Furthermore, clustering will be performed irrespectively if natural clusters exist or not, and the validity of the formed clusters is not easily determined. It is therefore mandatory to evaluate the basis of the formed clusters, such as possible biologic differences. In ARTICLE I-III, HCA was performed using 1-Pearson correlation and Wards' algorithm or complete linkage for cluster formation. COA (ARTICLE II) is analogous to other projection methods such as PCA and MDS and enables projection of the gene expression matrix into a low dimensional subspace that accounts for the main variance in the data.<sup>40</sup> It is based on Chi-square distances of discrete values and the representation obtained is similar to representations obtained by PCA. The advantage of COA is, however, that it enables projection of both genes and tumors within the same space.<sup>40</sup> Hence, genes and tumors that co-localize to the same space show positive associations.

The QT clust algorithm was used to identify clusters of co-expressed genes (ARTICLE I and II). QT clust works by forming a candidate cluster of the first gene and grouping genes with the highest correlation iteratively in a way that minimizes the cluster diameter ( $d$ ; defined as 1-Pearson correlation), until no further genes may be added without exceeding a predetermined  $d$ -value.<sup>37</sup> This procedure is performed with all genes in the data set as a seed. The largest cluster is then retrieved and the procedure repeated excluding the genes selected for the preceding cluster. This makes sure that the largest and most coherent clusters of genes are formed. For this algorithm, we used a  $d$ -value of 0.35 and cluster size restricted to at least 20/25 reporters; the  $d$ -values were adjusted empirically to result in a reasonable amount of formed clusters showing high correlation.

---

*Supervised Analyses*

In ARTICLES I, II, and IV, discriminatory comparisons between different group assignments were performed using the SAM algorithm. To evaluate the predictive strength of the gene signature associated with lymph node status (ARTICLE IV), the score for each tumor was bias corrected using leave-one-out cross validation (CV). Optimally, a training set is used for defining the class-predicting expression signature, whose predictive strength is subsequently determined in an independent sample test set. However, in microarray experiments the number of samples in each group is often too small for obtaining training and test sets. In these situations, CV approaches may be more suitable.<sup>48</sup> In these methods, one sample is left out when constructing the gene list to be used for scoring. The predictor score for the withdrawn sample is thereafter calculated and the sample is classified. This procedure is repeated until all samples have been classified.<sup>48</sup> In the present investigation we used gene lists of fixed length (50 genes) in all CV-loops, since this number of genes corresponded to a good compromise between FDR and FNR.

*Biological Interpretation*

To investigate possible biological properties of the gene clusters identified in ARTICLES I and II, the EASE software was applied.<sup>49</sup> EASE enables identification of significantly enriched GO categories in a given list of genes. Step-down Bonferroni multiplicity-corrected p-values <0.05, calculated using EASE statistics, were considered significant.

**Array-based CGH**

Array based comparative genomic hybridization (CGH) uses the same microarray-based principles as gene expression profiling.<sup>50</sup> Typically, large genomic bacterial artificial chromosome (BAC) clones are printed on glass slides, and genomic DNA from a test sample and a reference sample with

normal karyotype are differentially labeled with fluorescent dyes and subsequently hybridized to the slide. The large number of clones possible to print on one array slide provides array CGH with a much better resolution than conventional CGH. In ARTICLE IV, whole-genome tiling resolution 32k BAC-arrays (Swegene DNA microarray resource centre at Lund University) were used to investigate genomic alterations in 38 UCs.

### **Mutation Screening**

Mutation screening of *FGFR3* and *TP53* was carried out with direct sequencing using standard procedures. All *FGFR3* regions in which mutations have been reported for UC (exons 7, 10, and 15)<sup>18</sup> were sequenced. For *TP53*, exons 4-9 were sequenced; a region covering the DNA-binding domain of *TP53* and in which the vast majority of mutations have been identified.<sup>51,52</sup> For samples included in the cDNA microarray experiments (ARTICLE I, and III), mutation analyses were carried out using cDNA from amplified RNA as template: identified mutations were sequence verified in samples from which genomic DNA was available. Samples hybridized to the oligonucleotide array (ARTICLES II-IV) were sequenced with genomic DNA as template and mutations were verified via reverse sequencing.

### **LOH Analysis**

LOH analysis was performed on tumors from which both tumor DNA and matching blood samples were available. A total of 17 highly polymorphic microsatellite markers, evenly distributed over both arms of chromosome 9, were selected (ARTICLES I-III). In ARTICLE I, two markers close to *TP53* at chromosome 17 were also analyzed. Allelic imbalance was defined as a more than 50% reduction in allele signal intensity and LOH was defined as the presence of at least two consecutive markers showing allelic imbalance.

## RESULTS AND DISCUSSION

### ARTICLE I and ARTICLE II

For ARTICLES I and II, the experimental settings and aims were largely the same. In both studies, gene expression profiling using microarray was used to explore the transcriptional diversity in UC. In addition, we investigated possible associations between the expression profiles and tumor stage/grade, or mutation status of *FGFR3/TP53* and LOH for chromosome 9. In ARTICLE I, non muscle-invasive tumors (Ta and T1) were analyzed whereas ARTICLE II focused on T1-T4 tumors. Below, a summary of the combined findings in these two studies is presented.

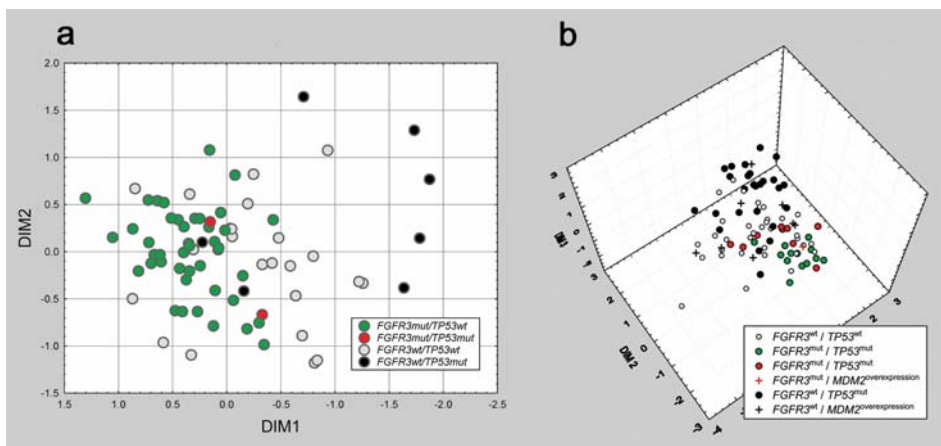
The mutation screening of *FGFR3* and *TP53* was performed on 150 out of 163 tumors (Table 1). As expected, *FGFR3* mutations were found to be inversely associated and *TP53* mutations to be positively associated with tumor stage/grade.<sup>53-61</sup> Also, in line with previous investigations,<sup>61,62</sup> *FGFR3* mutations were highly correlated with *FGFR3* overexpression; in fact *FGFR3* expression was the most discriminatory transcriptional alteration when comparing *FGFR3*<sup>mut</sup> and *FGFR3*<sup>wt</sup> cases.

**Table 1.** Mutation frequencies of *FGFR3* and *TP53* in UCs from 150 individual patients. Cases are stratified into tumor stage and grade, respectively.

Mutation	Ta	T1	T2-T4	G1	G2	G3
<i>FGFR3</i> <sup>mut</sup>	68%	34%	19%	80%	59%	20%
<i>TP53</i> <sup>mut</sup>	8%	37%	40%	9%	12%	43%

When investigating tumor mutation status in relation to expression profiles it was observed that the mutational patterns of *FGFR3* and *TP53* were strongly associated with global gene expression. The MDS of Ta/T1 tumors (ARTICLE I) showed a highly polarized pattern where *FGFR3*<sup>mut</sup> tumors clustered together and were separated from *TP53*<sup>mut</sup> cases (Figure 2a). This

pattern was also evident in the COA representation of T1-T4 tumors (ARTICLE II); tumors with  $FGFR3^{mut}$  clustered separately from tumors with TP53 impairment (either by  $TP53^{mut}$  or  $MDM2$  overexpression) in the COA representation, seemingly independent of histological and morphological status (Figure 2b). Moreover, both the MDS and the COA representations indicated that tumors with concomitant  $FGFR3$  and  $TP53$  mutations ( $FGFR3^{mut}/TP53^{mut}$ ) were more similar to  $FGFR3^{mut}/TP53^{wt}$  than to  $FGFR3^{wt}/TP53^{mut}$  tumors. The difference in gene expression profiles was largely dependent on a gene signature specific for cell-cycle related transcripts that showed increased expression in tumors with TP53 impairment. The fact that  $FGFR3^{mut}/TP53^{mut}$  tumors showed lower expression of this signature as compared to  $FGFR3^{wt}/TP53^{mut}$  tumors further strengthens the hypothesis that  $FGFR3^{mut}/TP53^{mut}$  cases are genetically progressed  $FGFR3^{mut}$  tumors rather than  $TP53^{mut}$  tumors with subsequent accumulation of  $FGFR3^{mut}$ .



**Figure 2.** Expression patterns of UC are highly associated with  $FGFR3$  and  $TP53$  mutation status. a) Unsupervised MDS representation of Ta and T1 tumors based on the 6749 genes, and b) unsupervised COA representation of TaG3 and T1-T4 tumors based on the 3334 genes. Cases are color-coded according to  $FGFR3$  mutation status and TP53 impairment.

In line with previously published expression studies of UC,<sup>63-71</sup> we found a general association between tumor stage/grade and the global gene expression patterns. This was illustrated by HCA and MDS in ARTICLE I, and by HCA and COA in ARTICLE II. Thus, the cosegregation of tumors of similar grades and stages in unsupervised analyses indicate that large gene signatures correlate with tumor histopathology. Specifically, overexpression of genes related to extracellular matrix (ECM) and immunological transcripts correlated with tumor invasiveness. Conversely, low grade Ta tumors revealed low expression of cell-cycle genes and high expression of ribosomal transcripts.

Apart from a general downregulation of a large number of genes on chromosome 9 (ARTICLE I), we did not find any specific transcriptional event associated with LOH for chromosome 9. However, we noted that a subset of low grade Ta tumors, which all showed *FGFR3* mutation and retention of chromosome 9, were highly similar in gene expression (ARTICLE I). This group of tumors also showed the lowest expression of cell-cycle genes and hence, this may indicate that the loss of chromosome 9 is associated with tumor progression rather than neoplastic initiation.

Finally, discriminatory analyses were applied to explore transcriptional events associated with clinical variables. In ARTICLE I, a gene signature associated with short recurrence-free follow-up for superficial tumors was described. The gene list was highly enriched for genes associated with cell-adhesion. In ARTICLE II, discriminatory analyses identified a gene signature whose high expression predicted absence of lymph node metastasis in patients submitted to radical cystectomy. In fact, this gene signature was superior to clinical stage in predicting lymph node metastasis. Furthermore, the discriminatory genes showed an impressive predictive power for overall survival when combined with histopathological tumor stage. It is noteworthy that a large proportion of these genes were associated with the antigen presenting machinery (APM). We therefore hypothesize that the low expression



of APM-related transcripts in tumors with metastasis may reflect an immune escape phenotype,<sup>72,73</sup> which is not able to trigger immune responses vital for the suppression of tumor spread.

### ARTICLE III

To explore the genetic relation between syn- or metachronous tumor development, 49 tumors from 22 patients were studied with gene expression profiling. The majority of tumors were also investigated using CGH, LOH analysis of chromosome 9, and mutation analysis of the *FGFR3* and *TP53* genes. Although CGH, LOH, and mutation analyses indicated a clonal relationship between most syn- and metachronous tumors from individual patients, the combined analyses pointed to a complex genetic progression model; no simple karyotypic relationship was detected between initial and recurring or synchronous bladder tumors. Thus, the present findings corroborate previous results that the chronology of tumor presentation is not reflected in the genetic progression of the tumors.<sup>74</sup> In contrast, expression profiling revealed a strong similarity between syn- and metachronous tumors; samples from the same patient almost exclusively clustered close to each other in unsupervised HCA when compared with a large reference set of tumors of similar stages and grades. A more detailed investigation revealed that the strong expressional correlation between syn- and metachronous tumors was close to the correlation seen between normal urothelial samples from different individuals, implying that the small differences observed are largely caused by experimental variation. The only exception was tumors that progressed from Ta/T1 to T2, possibly reflecting the shift in tumor microenvironment connected with muscle invasion.

The observation that tumors with more complex genomes frequently appear earlier than clonally related, but less evolved, tumors, suggest that genetically altered cells, with clonally related but differently evolved genomes

may co-exist in the urothelium, and that cells in these fields independently may produce overt tumors.<sup>75</sup> Indeed, studies have shown that hyperplastic and dysplastic intraurothelial lesions in patients with UC commonly share genetic alterations with adjacent tumors.<sup>76-81</sup> In addition, it has been observed that genomic imbalances and gene mutations are also present in histologically normal-looking mucosa surrounding the tumor.<sup>76-85</sup> Given the remarkably stable expression profiles of syn- and metachronous tumors within individual patients, the formation of a fixed expression profile may be considered as a possible primary event in the development of UC.

#### ARTICLE IV

Genomic copy-number profiles were obtained for 38 UCs using array-based CGH. With the aim to identify oncogenes of importance for UC progression, commonly amplified regions specific for high grade and invasive tumors were delineated and compared with gene expression data collected using microarray analysis and real time PCR. The most frequent amplification was found in 35% of high grade cases and localized to 6p22. The high resolution provided by the 32k BAC-arrays, revealed a minimal overlap of 1 Mb that was present in 90-100% of cases; a region containing *OACT1*, *E2F3*, *CDKAL1*, and *SOX4* as the only mapped genes. Using cases with no copy-number gain of this region as reference, it was further shown that primarily *CDKAL1* and *E2F3*, and to a somewhat lesser extent *SOX4*, showed a strong association between amplification and gene overexpression. We conclude that *CDKAL1*, *E2F3*, and *SOX4* may be considered as possible oncogenes in UC with possible importance for an aggressive phenotype.

Two additional amplicons were specific for advanced tumors, at 8q22 (4.5Mb) and at 2p55 (1Mb), respectively. Intriguingly, these two regions occurred in a mutually exclusive pattern and contained several related genes and were therefore seemingly paralogous. Further analyses revealed that

---

amplification of *YWHAZ* (*14-3-3-zeta*) at 8q22 and *YWHAQ* (*14-3-3-theta*) at 2p55 both correlated with gene expression. Thus, the results highlight gene members of the 14-3-3-family to be of possible for tumor progression in UC.

Homozygous deletions were detected at nine separate chromosomal locations. Deletion of the *CDKN2A/CDKN2B* region at 9p21 was most frequent (32%), covering all stages and grades. Other known tumor suppressor genes found homozygously deleted were *PTEN* at 10q23 and *RBI* at 13q14, deleted in one case each. Noteworthy, four of the six remaining homozygous deletions were found on chromosome 9, indicating that chromosome 9 is particularly susceptible for homozygous deletions. A homozygous deletion at 9q21 was observed in two cases. We therefore screened a cohort of 48 UCs for sequence mutations in a gene within this region, *OSTF1*, but did not find any missense mutations.

---

## REVIEWS

Numerous studies of molecular changes in UC have been performed over the years. In line with other neoplasms, investigations have revealed a variety of recurrent genetic changes. Below, results obtained in the present investigation will be discussed in relation to previously published studies. The first section encompasses frequent alterations associated with UC, as well as recent advances in the understanding of tumor evolution and clonality. The second section gives a comprehensive review of gene expression profiling studies performed on bladder cancers.

### MOLECULAR ALTERATIONS IN UROTHELIAL CARCINOMA

#### Recurrent Chromosomal and Genetic Changes

A recent review of 188 published karyotypes of urothelial tumors concluded that, cytogenetically, chromosome 9 was the most frequently involved chromosome, being numerically or structurally aberrant in 45% of the investigated cases.<sup>86</sup> Most often, monosomy 9 or loss of whole chromosome 9 arms is seen.<sup>86</sup> Molecular cytogenetic studies using CGH corroborate the frequent loss of chromosome 9 material in UC,<sup>87-90</sup> and conclude that TaG1 and TaG2 tumors show few additional genomic changes.<sup>89,90</sup> In contrast, cytogenetic and CGH studies have shown that T1-T4 and high grade tumors display a multitude of chromosome aberrations.<sup>86-89</sup> Apart from chromosome 9, recurrent structural changes in advanced tumors involve gain of 1q, 3q, 5p, 8q, 17q, and 20q, and loss of 5q, 6q, 8p, 11p, and 11q.<sup>87,90,91</sup> It has also been shown that the number of chromosomal aberrations significantly correlate with future stage

progression in T1 tumors.<sup>88</sup> Thus, a complex karyotype may be considered an adverse sign in UC.

The frequent loss of chromosome 9 material is also reflected by allelic loss, as shown by LOH studies.<sup>92-100</sup> Much effort has been directed to the identification of tumor suppressor genes on chromosome 9. However, it has been difficult to isolate small regions of common deletion. To this date, four candidate regions have been proposed. In the present study, array CGH analysis of 38 UCs revealed homozygous deletion of the *CDKN2A* loci at 9p21, coding for the well characterized cell-cycle inhibitors p16 and p14<sup>ARF</sup>, in 32% of cases.<sup>IV</sup> Similar high frequencies of homozygous deletion has been reported previously.<sup>101,102</sup> Thus, *CDKN2A* seem to be an important tumor suppressor loci that contribute to UC development. The other three regions involve 9q22.3,<sup>92,95,99,100,103</sup> 9q32,<sup>95,96,104</sup> and 9q34.<sup>92,98</sup> However, the importance of the candidate tumor suppressor genes within these regions (*PTC*, *DBCCR1*, and *TSCI*, respectively) is at present not clear. Homozygous deletion of these genes are infrequent,<sup>97,105,IV</sup> and mutation rates are low; *TSCI* and *PTC* both show missense sequence mutation in less than 5% of the cases,<sup>106-108</sup> and no mutation in the *DBCCR1* coding region has been found.<sup>97,104</sup> Nevertheless, studies using cell lines have shown that *DBCCR1* is commonly silenced by hypermethylation<sup>104</sup> and that exogenous expression of this protein suppresses proliferation.<sup>109</sup> Furthermore, *ptc*<sup>+/-</sup> transgenic mice showed earlier onset of neoplastic bladder transformation than wild type mice after exposure to chemical carcinogens, suggesting that *PTC* haploinsufficiency may be of importance for UC development.<sup>110</sup>

Apart from *CDKN2A* on 9p and the putative tumor suppressor genes on 9q, several important regulatory genes are recurrently found inactivated in UC. For example, mutations or homozygous deletion in the *PTEN* gene has been identified in 23% of late-stage cases,<sup>111</sup> and for the *RBI* gene, LOH and aberrant

protein expression is frequent in muscle-invasive tumors.<sup>112-114</sup> Aberrant RB1 expression has also been shown to correlate with poor prognosis.<sup>115</sup>

A number of recurrently amplified chromosomal regions have been observed in UC and UC-derived cell lines. CGH studies followed by fine-mapping by semiquantitative PCR or fluorescence *in situ* hybridization (FISH) have delineated two common amplicons at 8q22 and 6p22, respectively.<sup>90,116,117</sup> Subsequent array CGH investigations have verified and further delineated the boundaries of these amplicons.<sup>118-120,IV</sup> Within the 6p22 region the *CDKAL1*, *E2F3*, and *SOX4* have been described as the target oncogenes.<sup>117,121,IV</sup> In the present study, we observed that the 8q22 amplicon was mutually exclusive to another amplicon at 2p55.<sup>IV</sup> Interestingly, these regions contained two related genes, *YWHAZ* (*14-3-3-zeta*) and *YWHAQ* (*14-3-3-theta*), respectively, which both showed high correlation between overexpression and amplification. We therefore suggest that gene members of the 14-3-3-family may be oncogenes important for high grade disease. Amplification or overexpression of other genes have been reported, *e.g.*, *ERBB2*,<sup>122-124</sup> *TOP2A*,<sup>124</sup> *CCND1*,<sup>118,120,125,126</sup> *MDM2*,<sup>52,118,127</sup> and *CMYC*.<sup>120,126</sup> Moreover, using direct sequencing, point mutations causing oncogenic activation of *RAS* gene family members (*HRAS*, *KRAS2*, and *NRAS*) has been found in 13% of UCs.<sup>128</sup> However, the two most commonly mutated genes in UC are the oncogenic activation of the *FGFR3* and inactivation of the *TP53* genes, respectively. Below, a detailed description of these genes is given.

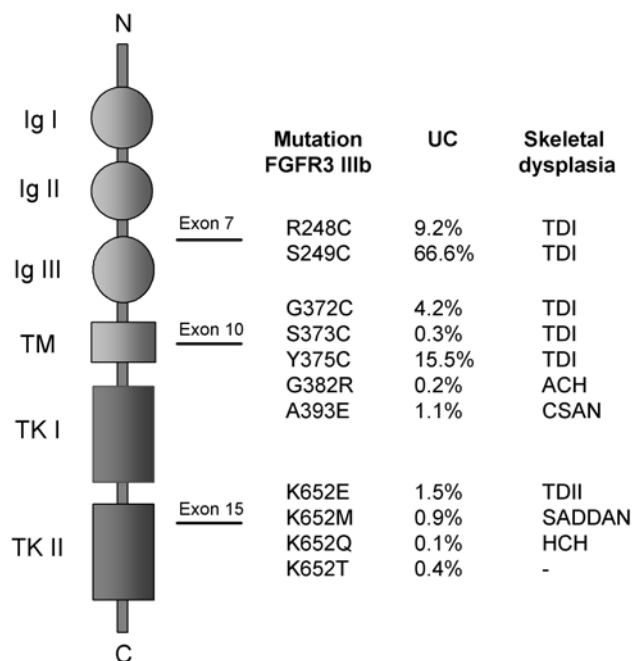
### *FGFR3*

In 1999, Cappellen and coworkers found that a significant proportion of UCs display specific missense mutations in the fibroblast growth factor 3 gene (*FGFR3*).<sup>129</sup> Numerous studies subsequently confirmed their findings and *FGFR3* mutations are now recognized as one of the most characteristic genetic alterations seen in UC.<sup>53-62,128,130-134,I,II</sup>

FGFR3 belongs to a family of at least four transmembrane receptor tyrosine kinases, FGFR1-FGFR4.<sup>135</sup> The fibroblast growth factors (FGFRs) are activated by the fibroblast growth factors (FGFs), which in concert with heparin or heparan sulfate proteoglycan induce receptor dimerization, and autophosphorylation of tyrosine residues in the cytoplasmic domain of the receptor molecule.<sup>135</sup> At least 23 different FGFs have been identified. Furthermore, different splice variants for each receptor have been found, each with different affinity for the various FGF ligands.<sup>136</sup> The *FGFR3* gene contains 19 exons of which exons 2-18 encode the FGFR3 protein product.<sup>137</sup> Two major tissue specific splice variants have been reported; the IIIb and the IIIc variant, of which IIIb is preferentially expressed by epithelial cells.<sup>129,138</sup> The specific details of FGFR3 signaling are however not yet fully resolved. Studies have shown that SH2 mediated activation of the RAS-ERK and the PI3K-AKT signaling pathways may be important.<sup>139,140</sup> Also, it has been suggested that cell-specific differences in FGFR3 signaling may depend upon differences in STAT activation.<sup>136</sup>

Intriguingly, mutations in *FGFR3* have previously been found to be associated with several germline human skeletal disorders such as thanatophoric dysplasia type I and II (TDI and TDII), achondroplasia, hypochondroplasia, and severe hypochondroplasia with developmental delay and acanthosis nigricans (SADDAN).<sup>141,142</sup> The severity of these syndromes varies according to the specific *FGFR3* mutation and *in vitro* studies have shown that the identified mutations lead to constitutive activation of the receptor.<sup>143-145</sup> In UC, the R248C, S249C, G372C, and Y375C mutations constitute approximately 95% of all identified mutations<sup>18</sup> (Figure 3). All of these involve amino acid changes from a non-cysteine to a cysteine, creating ligand independent homodimerization, though *de novo* disulphide linkage<sup>142,146</sup> Furthermore, they are associated with TD, possibly reflecting that these mutations have the greatest effect on the protein.<sup>143</sup> Indeed, studies have shown that the most profound FGFR3 activation

is seen for the mutations causing the lethal TD disorder.<sup>143,144</sup> Clearly, activating mutations in the *FGFR3* gene cause reduction of chondrocyte proliferation.<sup>147,148</sup> Conversely, cell lines transfected with a S249C mutant *FGFR3* IIIb have been demonstrated to induce tumor formation when xenografted into nude mice.<sup>62</sup> It is therefore interesting that identical activating mutations of *FGFR3* may either suppress or promote proliferation, implying that the effects of *FGFR3* signaling must be highly cell-type specific.



**Figure 3:** Schematic view of the *FGFR3* gene. The *FGFR3* protein consists of three extracellular immunoglobulin-like domains (IgI-IgIII), a transmembrane domain (TM) and a split intracellular tyrosine-kinase domain (TKI and TKII).<sup>136</sup> Somatic mutations identified in UC are given in relation to the gene structure. The distribution of *FGFR3* mutations is obtained from a total of 849 cases; 784 previously published cases as reviewed by Knowles,<sup>18</sup> and 65 cases with *FGFR3* mutations identified in the present study.<sup>I,II</sup> For each mutation, the germline associated form of skeletal dysplasia is also indicated; thanatophoric dysplasia type I and II (TDI and TDII), achondroplasia (ACH), hypochondroplasia (HCH), Crouzon syndrome and acanthosis nigricans (CSAN), and severe hypochondroplasia with developmental delay and acanthosis nigricans (SADDAN).



Apart from a low proportion of cervical carcinomas<sup>129,149,150</sup> and multiple myelomas,<sup>151</sup> *FGFR3* mutations are not commonly found in other malignancies.<sup>150,152</sup> Recently, however, *FGFR3* mutations have been identified in 39% of seborrheic keratoses,<sup>153</sup> 85% of adenoid seborrheic keratoses,<sup>154</sup> and 33% of nonorganoid, nonepidermolytic epidermal nevi,<sup>155</sup> which are benign skin lesions with papillary growth. These skin lesions are related with another skin lesion, acanthosis nigricans, which is found in patients with some of the *FGFR3*-associated germline skeletal disorders.<sup>141</sup> It has also been demonstrated that targeted expression of an activated *fgfr3* mutant to the epidermis of mice, induce the development of benign epidermal tumors.<sup>153</sup>

In UC, a striking association between *FGFR3* mutation and tumor stage and grade has consistently been observed.<sup>53-61,I,II</sup> In a large study comprising 260 primary UCs, *FGFR3* mutations were found in 77% of Ta, but only in 31% of T1 and in 15% of T2-T4 tumors.<sup>56</sup> A similar distribution was also observed within the present study (Table 1). Even within the group of stage T1 tumors differences are seen with respect to *FGFR3* mutation status; T1 tumors with microinvasion show a significantly higher mutation rate than extensively invading T1 tumors.<sup>131</sup> Furthermore, mutations have been identified in 75% of urothelial papillomas, a benign urothelial lesion.<sup>55</sup> This suggests that the *FGFR3* mutation contribute to papillary tumor formation of urothelial and epidermal lesions, but probably does not alone contribute to a malignant phenotype.

The possible importance of *FGFR3* signaling in UC raises the possibility of using therapeutic drugs directed at *FGFR3* or downstream mediators of signaling such as RAS. For example, CHIR-258, a *FGFR3* inhibitor has been shown to inhibit growth of multiple myeloma cell lines with activated *FGFR3*, both *in vitro* and in *in vivo* mouse models, results favoring future clinical studies.<sup>156</sup>

---

*TP53*

*TP53* is one of the most vital genes in a cell's protection from DNA damage and aberrant growth signals. Impairment of *TP53* function is seen in most human malignancies, commonly by DNA point mutations or deletions of the coding sequence, but also by alterations of regulatory proteins such as MDM2 or p14<sup>ARF</sup>, or by inactivation through viral infection.<sup>157</sup> In the present study, we observed *TP53* mutations in 9% of G1, 12% of G2, and 43% of G3 tumors (Table 1), frequencies similar to what has previously been reported.<sup>60,158</sup> Hence, a correlation between *TP53* mutation and tumor stage and grade is apparent; mutations are much more common in high grade and invasive tumors. Most analyses of *TP53* alterations have however been performed by investigating aberrant protein expression in tissue sections using immunohistochemistry (IHC).<sup>159</sup> In these studies, a similar association with increasing tumor stage and grade has been observed, and a good correlation between *TP53* sequence mutations and *TP53* immunoreactivity has been reported.<sup>52,160</sup> Even though *TP53* alterations are highly associated with adverse tumor phenotypes, published reports are contradictory regarding *TP53* as an independent marker for disease outcome. A newly published meta-analysis, evaluating the results from 117 studies comprising more than 10,000 patients, concluded that *TP53* changes are only weakly predictive of recurrence, progression, and mortality in bladder cancer.<sup>159</sup>

*TP53* inactivation may also be accomplished by overexpression of the MDM2 protein, which acts by promoting proteosomal degradation of *TP53*.<sup>161</sup> Amplification or overexpression of *MDM2* is not uncommonly seen in high grade tumors.<sup>162,163</sup> Interestingly, by using a combination of markers, such as *TP53* and MDM2,<sup>164</sup> or *TP53*, MDM2, and CDKN1A (p21),<sup>52</sup> independent predictive information for poor survival in UC has been observed.

### Molecular Pathways in UC Development

Based on histologic mapping data, Koss<sup>165</sup> suggested the existence of two different developmental pathways in UC; one primarily giving rise to papillary low grade tumors and one nonpapillary in which dysplasia and Tis subsequently develops into muscle-invasive and metastasizing tumors. Subsequent molecular analyses have further strengthened this theory. For example, several studies have found that chromosome 9 alterations present in hyperplasias also seen in concomitant or recurrent papillary tumors.<sup>79,166,167</sup> In contrast, Tis and dysplasia regularly display changes intimately associated with high grade and invasive tumors.<sup>76-78,168-171</sup> Thus, both histologic and molecular evidence suggest that at least two different developmental pathways exist in UC. During recent years, much attention has been given to the *FGFR3* and *TP53* genes, and it has been suggested that alterations of these genes may be key events in two such pathways.<sup>18,19,56,60</sup>

For *FGFR3*, the extremely high mutation frequency in Ta tumors, contrasted by a low mutation frequency in invasive tumors and Tis,<sup>54,56,61</sup> undoubtedly suggests that oncogenic signaling by *FGFR3* is of vital importance for the development of non-invasive papillary tumors. A recent study performed by Jebar *et al.* showed that activating mutations of *RAS* gene family members, which are possible downstream mediators for *FGFR3* induced activation of the RAS-ERK signaling pathway, are found mutually exclusive to *FGFR3* mutations.<sup>128</sup> Further evidence for the RAS-ERK pathway to be of crucial importance in development of papillary tumors was presented by Zhang *et al.*<sup>172</sup> The authors introduced urothelium-specific expression of mutant Ha-ras in transgenic mice and observed that, *in vivo*, activated Ha-ras induce urothelial tumor formation. Interestingly, the mice only developed hyperplasia and papillary low grade tumors. Thus, increased signaling via the Ras-ERK pathway, by either *FGFR3* or *HRAS* mutations, may be a key event in the development of hyperplasia and papillary tumors in UC.

In contrast to papillary tumors, impairment of the TP53 pathway, by *TP53* mutations or MDM2 overexpression, is frequently observed in Tis lesions and in the more advanced tumor stages.<sup>52,168,169,171,173</sup> Further evidence that TP53 inactivation may trigger development of Tis and subsequent progression into invasive tumors was reported by Zhang *et al.*<sup>174</sup> The authors found that transgenic mice with urothelial-directed expression of SV40, which specifically inhibits TP53 and RB1, developed Tis and invasive tumors, but not hyperplasia and low grade papillary tumors.

Thus, oncogenic activation of *FGFR3/HRAS* and impairment of TP53 may be key genetic events in two alternative pathways of UC. The former promotes formation of papillary low grade tumors, possibly preceded by hyperplasia, whereas the latter pathway often seems to involve TP53 and lead to Tis and subsequent invasive tumors. In the present study, we could show that the difference between *FGFR3*- and *TP53*-mutated tumors is also reflected by large differences in gene expression profiles.<sup>I,II</sup> In addition, we observed that tumors with *TP53* mutation and *MDM2* overexpression have highly similar global gene expression patterns,<sup>II</sup> further suggesting that alterations of MDM2 may be a common and complementary mechanism for TP53 pathway inactivation. It must, however, be noted that, albeit with low frequency, *FGFR3* mutated tumors sometimes do progress into high grade and invasive lesions, and when corrected for tumor stage/grade *FGFR3* mutation does not seem to add any prognostic information.<sup>61,175</sup> Nevertheless, the high grade and invasive *FGFR3* mutated tumors often show *TP53* impairment,<sup>56,60,61,II</sup> implying that *FGFR3* mutated tumors may acquire subsequent *TP53* mutations and the two pathways may thus ultimately converge upon muscle-invasion.

### **Tumor Clonality and Tumor Spread**

As previously noted, a characteristic feature of bladder cancer is the high occurrence of multiple (synchronous) and recurrent (metachronous) tumors. To explain the origin of these events, two major hypotheses have been put forth.<sup>176</sup> The first hypothesis suggests tumor spread from a primary tumor by either intraepithelial migration or intraluminal seeding, thereby assuming a monoclonal spread of tumor cells. The second theory assumes field cancerization<sup>177</sup> of large urothelial areas caused by exposure of carcinogens, and that this leads to the development of independent tumors. Thus, in the field cancerization model, tumors of different clonal origin will develop in the bladder.

To address these hypotheses, the genetic relationship between syn- and metachronous tumors has been investigated in a large number of molecular studies. For example, X-chromosome inactivation studies have been performed,<sup>178,179</sup> as well as cytogenetic analyses,<sup>180</sup> LOH,<sup>74,76-78,181,182</sup> FISH,<sup>181</sup> CGH,<sup>80</sup> genome-wide single nucleotide polymorphism (SNP) arrays,<sup>183</sup> and mutation analyses.<sup>74,76,82,182</sup> Based on the accumulated data, it may be concluded that the vast majority of syn- and metachronous tumors shows a clonal relationship. It is however important to note that discrepancies in the definition of monoclonality and oligoclonality are found between the above-mentioned studies. Monoclonality may be used to describe clonal relation to a common progenitor cell. In this scenario, synchronous or metachronous tumors may harbor different additional changes acquired during a subsequent genetic divergence. Alternatively, tumors may be described as oligoclonal if such differences are found. Accordingly, if markers for genetic changes responsible for early tumor development are omitted from the analysis (*e.g.*, only late occurring genetic changes are studied), no genetic relationship will be seen and the tumors may be classified as oligoclonal even though they still may be descendants of a single progenitor clone. Nevertheless, irrespective of what

terminology is used, the results point to that the leading mechanism behind tumor spread is clonal and that tumors originate from common progenitor cells. This process, however, often seems to be associated with the accumulation of sub-populations carrying additional and different genetic changes.

Intriguingly, during recent years histologic and genetic mapping studies have shown that large and continuous areas of malignant and pre-malignant pre-neoplastic lesions as well as morphologically normal-looking mucosa share genetic alterations.<sup>76-78,81-83,184</sup> For example, identical *TP53* mutations, are not only found within synchronous tumors at different locations, but also in pre-cancerous lesions and normal-looking urothelium separating the different tumor foci.<sup>76,81</sup> Moreover, it has been shown that, even though clonally related, later appearing tumors often show less complex patterns of changes than earlier occurring tumors, *i.e.*, the chronology of tumor recurrence does not adhere to the genetic evolution,<sup>74</sup> a finding also corroborated within the present study.<sup>III</sup> Thus, the reported data strongly suggests that metachronous tumors rather originate from a pool of progenitor cells, contained within the urothelium, and that clonally related tumors, but with different secondary changes, may develop independently.

In light of this, an alternative theory, the *field-first-tumor-later* model, was recently presented.<sup>75</sup> This proposes that, rather than an intraurothelial migration from a primary tumor, an intraepithelial spread of nonmalignant but genetically modified cells occur. The subsequent accumulation of genetic changes in these clones ultimately may produce overt tumors at different locations within the bladder. In this scenario, several different but clonally related subclones may coexist within the bladder simultaneously.

---

## GENE EXPRESSION PROFILING OF UROTHELIAL CARCINOMAS

In 2001, the first study of gene expression patterns in UC using microarray was published by Tykjaer *et al.*<sup>70</sup> who subjected 19 tumor biopsies and pooled single cell suspensions to microarray analysis on a 6.5k Affymetrix array. Although a rather small set of samples, the authors observed that expression of a large amount of genes correlated with tumor histopathology. A number of subsequent studies, using different array platforms and independent cohorts of samples, corroborated that much of the transcriptional variation observed in UC associates with tumor stage and grade, as reflected by a recurrent cosegregation of similar tumor stages and grades in unsupervised analyses.<sup>63-71,I,II</sup>

### Gene Expression Patterns and Tumor Histopathology

Dyrskjøl *et al.*<sup>65</sup> showed that it is possible to molecularly predict UC histopathology based on gene expression profiles using supervised learning algorithms. Utilizing a 7k Affymetrix array, a 32-gene classifier was built that provided correct classification in 84% of Ta, 50% of T1, and 74% of T2 tumors in a test set of 68 tumors.<sup>65</sup> Similar classification results have later been obtained in independent studies using 10k cDNA arrays,<sup>63</sup> and 22k Affymetrix arrays.<sup>68</sup> Although the individual gene lists used for classification differ significantly between studies, Blaveri *et al.*<sup>63</sup> showed that a high prediction accuracy could be maintained both when the classifier previously described by Dyrskjøl *et al.*<sup>65</sup> was applied on their own data, and vice versa. Taking into consideration that a large number of genes have shown differential expression between superficial and invasive tumors, many genes may behave similarly for classification purposes and differences between individual classifiers may therefore be expected.<sup>63</sup>

---

A common finding is that covarying genes with related biologic function are found to associate with specific histologic subtypes. For example, superficial tumors, especially low grade Ta tumors, frequently show increased expression of ribosomal genes, possibly reflecting a high level of protein synthesis.<sup>70,118,I</sup> Invasive tumors on the other hand, frequently show coordinated overexpression of genes with immunological function, and genes with structural and remodeling related to the ECM, *e.g.*, collagens, metalloproteases, cathepsins, and fibronectin.<sup>63-67,70,185,II</sup> Immunological transcripts have also been shown to correlate with Tis.<sup>64,186</sup> As expression of ECM-related transcripts is not characteristic for epithelial cells, several authors have raised concerns that the high expression of ECM-related transcripts may merely reflect contamination of the analyzed sample with non-neoplastic stromal cells. Nevertheless, this group of genes has been found to be associated with invasive tumors in most investigations, despite tumor specimens with very low amount of contaminating non-neoplastic cells.<sup>185,186</sup> For example, upregulation of ECM-related genes, *e.g.*, *MMP7* and *COL3A2*, has been observed and subsequent protein expression analyses using IHC on tissue sections confirmed *MMP7* expression in tumor cells whereas *COL3A2* was only expressed in the surrounding stromal tissue.<sup>185</sup> Moreover, expression of *CTGF*, overexpressed in samples from high stage tumors,<sup>63,II</sup> has been shown to promote angiogenesis and tumorigenesis in prostate cancer models when overexpressed in adjacent stromal cells.<sup>187</sup> Hence, albeit some genes may be expressed by other cells than tumor cells, the identification of such transcripts in biopsies may still be important for understanding the biology of aggressive tumor growth, as well as for tumor classification purposes.

It has also been observed that the expression of genes promoting cell-cycle progression (*e.g.*, *TOP2A*, *CDC2*, *CCNA2*, *CDC6*, and *PCNA*) show positive association with tumor morphology,<sup>63,65,71,II</sup> possibly reflecting the high



proliferative phenotype of low differentiated tumors. Interestingly, this gene cluster corresponds to a specific gene signature common for high grade tumors identified in a meta-analysis of expression data from several different human malignancies,<sup>188</sup> further substantiating the importance of these genes for neoplastic progression.

### **Gene Expression in *FGFR3* and *TP53* Mutated Tumors**

Our own studies, as well as previous reports, have revealed that *FGFR3* is highly expressed in Ta tumors and that *FGFR3* gene expression is highly associated with the presence of *FGFR3* mutation.<sup>61,62,11</sup> Overexpression of *FGFR3* has also been observed to associate with a papillary growth pattern.<sup>186</sup> As previously discussed, much evidence exist that *FGFR3* and *TP53* may be key players in two separate pathways of UC development. HCA data have indicated that *FGFR3* mutated tumors cosegregate in unsupervised cluster analyses.<sup>61</sup> In line with this, we found that the global gene expression patterns are highly associated with *FGFR3* and *TP53* mutation status in early-stage tumors.<sup>1</sup> A similar pattern was seen in the subsequent study of T1-T4 tumors.<sup>11</sup> In this study we also noted that cases with overexpression of *MDM2*, an alternative way for TP53 impairment, clustered with *TP53* mutated cases. Moreover, we observed that high expression of cell-cycle transcripts was a characteristic feature of *TP53*<sup>mut</sup> as compared with *FGFR3*<sup>mut</sup> cases. Notably, tumors with concomitant *FGFR3* and *TP53* mutations showed high expression of *FGFR3* but an intermediate expression of cell-cycle genes, suggesting that *FGFR3*<sup>mut</sup> tumors may genetically progress and accumulate *TP53* mutations with an associated increase in expression of proliferative transcripts.

---

## Prediction of Disease Recurrence and Progression

### *Superficial Tumor Recurrence*

Genes associated with superficial tumor recurrence in patients with Ta tumors has been addressed in two studies. Dyrskjøt *et al.*<sup>65</sup> built a 39-gene classifier that by CV showed a predictive accuracy of 75%. Also, in the present study, we identified genes associated with short-recurrence free follow up.<sup>1</sup> Even though the gene signatures presented in the two studies do not overlap on a gene-by-gene basis, both gene lists are enriched for transcripts with cell-adhesion related functions, suggesting that this particular group of genes may be of importance for development of superficial recurrences.

### *Progression of Superficial Tumors*

Efforts have also been made to identify transcripts which may be used for prediction of tumor recurrence and progression.<sup>186,189</sup> In a detailed investigation specifically designed to predict superficial tumor progression, a number of tumor suppressor genes and genes involved in apoptotic cell death pathways (*e.g.*, *SERPINB5*, *FAT*, *BIRC4*, and *BIRC6*) were found with higher expression in non-progressing samples.<sup>189</sup> Interestingly, the *FGFR3* gene was also highly expressed in non-progressing samples. Examples of genes found upregulated in progressing cases were the cell cycle related genes *CDC25B*, *CDC20*, and *MCM7*, and the apoptosis inhibitor *BIRC5* (survivin). However, when testing the predictor on an independent test set, a relatively low specificity was observed. The authors pointed out that this may be caused by successful treatment and limited follow-up data. This was supported by a more detailed investigation of the material which revealed that most patients with misclassified samples showed adverse clinopathologic signs during follow-up, thus substantiating the possible biologic and clinical relevance of the identified

gene signature.<sup>189</sup> Stage progression of Ta tumors has also been addressed by Wild *et al.*,<sup>186</sup> who obtained 79% correct classification using a CV approach. For example, these investigators found *FABP4* and *CTSE* to be upregulated in Ta tumors from patients that showed subsequent progression. A following IHC analysis for CTSE protein expression on tissue arrays supported the association between increased CTSE expression and progression of Ta tumors but did not provide independent prognostic information for overall survival.

#### *Progression of Muscle-Invasive Disease and Overall Survival*

For patients with muscle invasive tumors, three studies have specifically searched for gene signatures associated with tumor metastasis or cancer-associated death.<sup>63,68,11</sup> Identification of a poor-survival molecular signature could be of great importance to select patients that may benefit from more aggressive therapeutical interventions. Blaveri *et al.*<sup>63</sup> stratified their muscle-invasive samples in two extreme groups; one with poor prognosis (death occurring in <18 months, n=27) and one with superior prognosis (survival >18 months, n=13). They applied a PAM classifier that correctly classified 78% of the samples using a predictor composed of 24 genes. Later, Sanchez-Carbayo *et al.*<sup>68</sup> used two different approaches to identify markers for poor prognosis. A leave-one-out SVM algorithm was used with overall survival as end-point and predicted 74%. Of these, *HCLS1*, *ANK3*, *BIRC3*, *CD54*, and *TP53API* were studied in detail with log-rank and Kaplan-Meier tests, and all were significantly associated with poor patient outcome. Using an alternative approach, they further identified a list of 174 probes which expression associated with poor survival and lymph node metastasis. One of the top ranking genes from the latter analysis, *SNCA*, was validated using IHC on tissue microarrays and was confirmed to be significantly associated with tumor stage and overall survival. In ARTICLE II, we investigated a homogeneous cohort of cases treated with radical cystectomy and identified a gene signature which

could predict the presence of lymph node metastasis with high specificity and sensitivity. Furthermore, the gene signature was superior to clinical stage in pre-operative multivariate models for prediction of nodal status and survival, and showed an impressive predictive power for overall survival when combined with histopathological tumor stage. This was the first report that showed a significant effect of the identified gene signature after adjustment for known prognostic parameters in multivariate analyses. The identified gene signature contained transcription factors such as *STAT1* and *IRF1*, and contained transcripts for several structural components in the MCH class I antigen presentation machinery. We therefore hypothesize that lymph node negative tumors may be more susceptible to tumor suppression mediated by the immune system.

None of the above mentioned studies applied an independent set of samples to test the performance of the gene expression predictors, instead cross-validation was used. Hence future follow-up studies are therefore needed to confirm the suggested clinical value. Furthermore, no overlap on a gene-to-gene basis is observed between the gene signatures described. Explanation for this could be differences in sample selection. For example, Sanchez-Carbayo *et al.*<sup>68</sup> do not report treatment for the included patients, and since patients with muscle-invasive disease not treated with cystectomy show far higher mortality than untreated patients, this could be a confounding factor. Also, multivariate analyses correcting for known prognostic markers should be applied, this was only performed in one study.<sup>11</sup> Nevertheless, three independent investigations have identified expression patterns associated with survival and nodal status, raising hope for the possibility to, through molecular approaches, select patients who may benefit from more aggressive therapeutical interventions.

### **Normal and Morphologically Altered Bladder Mucosa**

Detailed investigations comparing tumor and normal urothelial tissue from healthy individuals have been performed in two studies.<sup>67,71</sup> A general increase in transcripts related to protein folding, mRNA splicing, energy pathways, glucose catabolism, and lipid metabolism was observed in tumor samples compared to normal tissue, suggesting that the transformation event is accompanied by an increased need of energy and mRNA splicing capability.<sup>71</sup> Moreover, both studies found *KRT7*, *KRT8*, and *SDC1* to be among the most discriminatory genes, raising the possibility to use these genes as potential markers for noninvasive tumors.<sup>67,71</sup> A subsequent screening of KRT7 expression in urine sediments by Western blot did however not provide sufficient sensitivity,<sup>71</sup> encouraging further studies using more sensitive methods.

Studies have also included normal-looking urothelium derived from bladder cancer patients.<sup>64,68</sup> Interestingly, these studies have reported transcriptional alterations, characteristic for high grade tumors, to be present in the normal-looking urothelial samples. Specifically, it was observed that the gene signature predicting poor-outcome also was present in normal-looking urothelium samples taken from the same bladder.<sup>68</sup> Similarly, morphologically normal urothelial samples from cystectomy patients has been shown to carry an expression signature specific for Tis samples.<sup>64</sup> Thus, expression analyses corroborate other molecular studies showing that genetic alterations are present already in normal-looking urothelium from patients with bladder cancer.<sup>78,80-85</sup>

### **Multifocal and Recurrent Tumors**

It has been observed that syn- and metachronous tumors, respectively, often cluster together, despite differences in stage and grade, suggesting a higher similarity in global gene expression than to be expected.<sup>66,189</sup> These findings

---

support the common clonal relationship between tumor recurrences as seen in many previous studies using other molecular techniques.<sup>176</sup> The close genetic relationship between syn- and metachronous tumors was also confirmed within the present study.<sup>III</sup> In fact, we could show that the correlation in expression profiles between such samples were remarkably high and close to what is seen when comparing normal samples from different individuals. Furthermore, the high similarity was observed even among cases with large karyotypic differences as detected by LOH and CGH analyses. This indicates that the establishment of a stable expression profile may be considered as an early event in UC.

#### **Concluding Remarks**

In conclusion, expression profiling using microarray has proved to be valuable technique for exploration of the molecular genetic events that characterize UC. Specific gene signatures, whose expression are related to histologic, morphologic, molecular, and clinical outcome groups, have been reported, thus offering new biologic insights into the pathogenesis of the disease. Furthermore, the findings may not only be important for classification and prediction purposes, but may also be essential for identification of molecular pathways to which novel treatment strategies may be directed.

---

## CONCLUSIONS

In the present study, we used gene expression profiling, mutation analyses of *FGFR3* and *TP53*, LOH analysis, as well as conventional- and array CGH analyses to characterize a large cohort of UCs. The main findings may be summarized as follows:

- gene signatures with specific biological functions correlate with, *e.g.*, high expression of ECM and immunologic genes in invasive tumors, overexpression of cell-cycle genes in *TP53* mutated tumors, overexpression of ribosomal transcripts in low grade tumors,
- mutations in *FGFR3* and *TP53* are correlated with large transcriptional differences and may thus be indicative for two different molecular pathways of UC,
- high expression of MHC-class I related genes in patients with muscle-invasive tumors provide prognostic information for lymph-node status and overall survival,
- the expression profile is remarkably stable in meta- and synchronous Ta or T1 tumors from the same patient. The formation of a fixed expression profile may be considered as a primary event in the development of UC,
- *E2F3*, *CDKAL1*, and *SOX4* in 6p22, and *YWHA (14-3-3)* gene family members in 8q22 and 2p25, respectively, are major target oncogenes important for high grade disease.

## SUMMARY IN SWEDISH

Varje år nydiagnostiseras cirka 2 000 personer med blåscancer i Sverige. Blåscancer drabbar främst män och är för närvarande den femte vanligaste cancerformen bland män efter prostata-, hud-, lung- och koloncancer. Risken att insjukna i blåscancer ökar med ålder och merparten av nydiagnostiserade patienter är över 60 år. Blåscancer är en heterogen sjukdom med avseende på sjukdomsförlopp. Fler än hälften (ca 75 %) av alla patienter har *ytliga* tumörer, dvs tumörer som endast växer i urinblåsans ytskikt. Av dessa ytliga tumörer uppvisar de flesta (ca 60 %) låg grad av cellförändring och även om dessa patienter ofta får återfall så är tumörutvecklingen sällan aggressiv och överlevnaden är över 95 % efter 5 års uppföljning. Resterande del av ytliga tumörer uppvisar högre grad av cellförändring och i denna patientgrupp är risken hög att tumören skall växa in i, eller igenom, blåsmuskulaturen (*muskelinvasiv* sjukdom). Ungefär en fjärdedel av alla blåscancerpatienter har redan utvecklat muskelinvasiv tumör vid diagnostillfället. För denna grupp är prognosen dålig och ungefär hälften avlider av tumörmestaser, ofta redan inom två år.

Cancer uppstår och utvecklas som en följd av successiva förändringar (*mutationer*) i en cells arvs massa (*gener*). I denna flerstegsprocess krävs att flera av cellens kontrollmekanismer sätts ur spel vilket slutligen leder till okontrollerad cellväxt – en tumör bildas. Trots att många studier har genomförts i syfte att kartlägga de genetiska förändringar som orsakar blåscancer så är kunskapen fortfarande relativt begränsad. Att vidare utforska varför tumörerna uppstår och varför vissa tumörer utvecklas snabbare och mer aggressivt än andra är därför av stor betydelse.

Vi har i våra studier använt oss av så kallad *microarray*-teknologi. Microarray är en teknik som studerar uttrycksnivåerna av tusentals gener för



varje tumörprov. Man kan således med denna teknik få en övergripande bild av vilka gensystem som är påverkade i blåscancer. Vår övergripande målsättning var att med denna metod utforska de genetiska mekanismer som ligger bakom blåscancers uppkomst samt vilka förändringar som sker vid tumörutveckling från yttlig till muskelinvasiv cancer. Identifiering av sådana förändringar kan både ge förklaring till det spridda sjukdomsförloppet som observeras hos patienter och dessutom ge möjlighet till ny diagnostik, d v s en möjlighet att identifiera de patienter som har större risk för aggressiv sjukdom.

Till grund för denna avhandling ligger fyra delarbeten. I de två första arbetena (*Artikel I* och *II*) studerades genuttrycket i tumörprov från totalt 163 patienter. Vi kunde identifiera ett antal genetiska förändringar som skiljer de mer godartade från de mer aggressiva tumörformerna. Resultat från tidigare studier har antytt att två specifika gener, *FGFR3* och *TP53*, kan vara av betydelse för uppkomst av blåscancer. Av dessa så verkar genen *FGFR3* vara viktig för uppkomst av ytliga tumörer och genen *TP53* för uppkomst av muskelinvasiva tumörer. I våra studier fann vi ytterligare bevis för betydelsen av dessa gener. I *Artikel I* identifierade vi även en grupp av gener med betydelse för tumöråterfall. Som tidigare nämnts så har patienter diagnostiserade med muskelinvasiv sjukdom mycket dålig prognos. Vi undersökte därför specifikt denna patientgrupp och fann ett antal gener som vars förändrade uttryck kunde förutsäga överlevnad hos patienter (*Artikel II*). Denna kunskap innebär att man tidigt kan identifiera aggressiv tumörväxt och på så sätt urskilja de patienter med sämst prognos och som skulle dra nytta av en mer intensiv behandling.

Som tidigare nämnts så är tumöråterfall vanligt bland blåscancerpatienter. I *Artikel III* studerade vi därför förhållandet mellan återfallstumörer inom samma patient. Våra resultat gav ytterligare stöd till tidigare framförda teorier om hur en tumör sprids och ger upphov till återfall. Studien visade bland annat att alla tumörer hos en och samma patient uppvisar snarlika genuttrycksförändringar. Detta tyder på att tumörerna är besläktade

---

med varandra och att de har utvecklats från en och samma genetiska förändrade ursprungscell.

Ett vanligt sätt att aktivera gener som bidrar till tumörutveckling är kopietalsförökning. Denna relativa förökning av en gens kopietal kan leda till ökat genuttryck och således ökad genaktivitet. I *Artikel IV* studerade vi sådana förändringar i tumörer från 38 patienter med blåcancer. Vi kunde visa att kopietalsökning av gener som *CDKAL1*, *E2F3*, *SOX4*, *YWHAQ* och *YWHAZ*, leder till förhöjt genuttryck och därför kan vara av betydelse för utveckling av aggressiv cancer.

Sammanfattningsvis så har våra studier av blåcancer bidragit med värdefull information om vilka genetiska system som är förändrade i blåcancer och hur blåcancer utvecklas. Vi har dessutom kunnat koppla ett antal förändringar till specifika undergrupper av tumörer, information som kan vara av betydelse för framtida molekylär diagnostik eller behandlingsformer.

---

## ACKNOWLEDGEMENTS

Many people have contributed to this work and supported me during my years at the Department of Clinical Genetics. I would like to express my sincere gratitude to the following:

*Mattias Höglund*, my supervisor. Thank you for accepting me as your student, for being so supportive, enthusiastic and generous with your time, and for all stimulating discussions we have had.

Professor *Felix Mitelman* for giving me the opportunity to conduct my Ph.D. studies at the Department of Clinical Genetics, and making this laboratory into such a stimulating environment.

The group of dedicated researchers in Lund and Helsingborg who have made these studies of bladder cancer possible: The excellent urologists *Wiking Månsson*, *Fredrik Liedberg*, and *Sigurdur Gudjonsson*, from the department of Urology; *Gunilla Chebil* and *Lena-Maria Lundberg* at the departments of Pathology in Helsingborg and Lund, respectively; *Imad Fadl-Elmula* who introduced bladder cancer research to our department; and *Mårten Fernö*, *Kristina Lövberg*, and *Pär-Ola Bendahl* from the department of Oncology. Thank you for all constructive and enjoyable meetings we have had during these years. The time and effort you all have put into the different studies has truly been a great source of inspiration to me.

My friends and fellow Ph.D. students at the department of Clinical Genetics: *Aikaterini*, *Anna A*, *Anna D*, *Emely*, *Björn*, *Charlotte*, *David*, *Helena*, *Henrik*, *Josef*, *Karin*, *Karoline*, *Malin*, *Markus*, *Petra*, *Srinivas*, *Therese*, *Tord*, and *Ylva* who really have made these years into something extra! In particular, I would like to thank: *Anna Andersson*, my true microarray-buddy, with whom I have shared countless hours of hybridization experiments. Thank you for all cheerful talks we have had (whether about microarrays, statistical methods that we just can't understand, or other, not-so-scientific topics); *Markus Heidenblad*, for great collaborations and fun moments (as well as on the golf course); *Srinivas Veerla*, for your amazing kindness and for aiding me with your programming expertise; and *Kajsa Paulsson*, for all enjoyable discussions, and for taking the time to constructively comment my works.

*Carin Lassen* and *Margareth Isaksson*, for always finding time to help me out in the lab.

---

The senior research staff at the Department of Clinical Genetics: *Bertil, Catarina, Fredrik, Kristina, Karin, Ludmilla, Mia, Nils, Nina, Ioannis, Samuel, Thoas, Ulf, and Yuesheng*. In particular I would like to thank *Thoas Fioretos* for all interesting microarray-related meetings and discussions, and for the appreciated comments on my works.

The rest of the personnel at the Department of Clinical Genetics for making this place such a nice place to work at!

*Sonja Aits, Christer Halldén, and Christina Lind-Halldén* for great collaboration with the sequencing and LOH analyses

Professor *Åke Borg* and the people at the Department of Oncology and the Swegene DNA microarray resource centre. I would like to thank *Carina, Göran, Johan V, Johan S, Lao, and Sofia* for making the tedious work of clone preparation and microarray testing into a truly enjoyable experience.

To all the co-authors for the stimulating collaborations.

My family, *Margareta, Göran, and Hanna* for the tremendous support you given me over the years. I appreciate it more than you ever could imagine.

*Frida, Erika, and Tarja*. Thank you for giving me so many fun moments at Fäladen.

Finally, a big up to my all my friends representing Gbg and Malmö

The work presented herein was supported by funds from: the Swedish Cancer Society; the Swedish Research Council; the Finnish Cancer Society; the Gunnar, Arvid and Elisabeth Nilsson Foundation; the Crafoord Foundation; the John and Augusta Persson Foundation; the IngaBritt and Arne Lundberg Foundation; the Maud and Birger Gustavsson Foundation; the Petrus and Augusta Hedlund Foundation; and the Sigríd Jusélius Foundation. The microarray facility was supported by the Knut and Alice Wallenberg Foundation via the Swegene Program.

---

## REFERENCES

1. Socialstyrelsen. Cancer Incidence in Sweden 2004.
2. Reuter VE. The pathology of bladder cancer. *Urology*. 2006;67:11-17; discussion 17-18.
3. Droller MJ. Biological considerations in the assessment of urothelial cancer: a retrospective. *Urology*. 2005;66:66-75.
4. Holmang S, Hedelin H, Anderstrom C, Johansson SL. Long-term followup of all patients with muscle invasive (stages T2, T3 and T4) bladder carcinoma in a geographical region. *J Urol*. 1997;158:389-392.
5. Larsson P, Wijkstrom H, Thorstenson A, et al. A population-based study of 538 patients with newly detected urinary bladder neoplasms followed during 5 years. *Scand J Urol Nephrol*. 2003;37:195-201.
6. Leblanc B, Duclos AJ, Benard F, et al. Long-term followup of initial Ta grade 1 transitional cell carcinoma of the bladder. *J Urol*. 1999;162:1946-1950.
7. Sengupta S, Blute ML. The management of superficial transitional cell carcinoma of the bladder. *Urology*. 2006;67:48-54; discussion 54-45.
8. Millan-Rodriguez F, Chechile-Toniolo G, Salvador-Bayarri J, Palou J, Algaba F, Vicente-Rodriguez J. Primary superficial bladder cancer risk groups according to progression, mortality and recurrence. *J Urol*. 2000;164:680-684.
9. Millan-Rodriguez F, Chechile-Toniolo G, Salvador-Bayarri J, Palou J, Vicente-Rodriguez J. Multivariate analysis of the prognostic factors of primary superficial bladder cancer. *J Urol*. 2000;163:73-78.
10. Wolf H, Melsen F, Pedersen SE, Nielsen KT. Natural history of carcinoma in situ of the urinary bladder. *Scand J Urol Nephrol Suppl*. 1994;157:147-151.
11. Sylvester RJ, van der MA, Lamm DL. Intravesical bacillus Calmette-Guerin reduces the risk of progression in patients with superficial bladder cancer: a meta-analysis of the published results of randomized clinical trials. *J Urol*. 2002;168:1964-1970.
12. Bryan RT, Wallace DM. 'Superficial' bladder cancer - time to uncouple pT1 tumours from pTa tumours. *BJU Int*. 2002;90:846-852.
13. Herr HW. Tumor progression and survival of patients with high grade, noninvasive papillary (TaG3) bladder tumors: 15-year outcome. *J Urol*. 2000;163:60-61; discussion 61-62.
14. Holmang S, Hedelin H, Anderstrom C, Johansson SL. The relationship among multiple recurrences, progression and prognosis of patients with stages Ta and T1 transitional cell cancer of the bladder followed for at least 20 years. *J Urol*. 1995;153:1823-1826; discussion 1826-1827.
15. Prout GR, Marshall VF. The prognosis with untreated bladder tumors. *Cancer*. 1956;9:551-558.
16. Dinney CP. Therapy of invasive bladder cancer. *Urology*. 2006;67:56-59; discussion 60-51.
17. Stein JP, Skinner DG. Radical cystectomy for invasive bladder cancer: long-term results of a standard procedure. *World J Urol*. 2006.

18. Knowles MA. Molecular subtypes of bladder cancer: Jekyll and Hyde or chalk and cheese? *Carcinogenesis*. 2006;27:361-373.
19. Wu XR. Urothelial tumorigenesis: a tale of divergent pathways. *Nat Rev Cancer*. 2005;5:713-725.
20. Lennon GG, Lehrach H. Hybridization analyses of arrayed cDNA libraries. *Trends Genet*. 1991;7:314-317.
21. Alwine JC, Kemp DJ, Stark GR. Method for detection of specific RNAs in agarose gels by transfer to diazobenzyloxymethyl-paper and hybridization with DNA probes. *Proc Natl Acad Sci U S A*. 1977;74:5350-5354.
22. Schena M, Shalon D, Davis RW, Brown PO. Quantitative monitoring of gene expression patterns with a complementary DNA microarray. *Science*. 1995;270:467-470.
23. DeRisi J, Penland L, Brown PO, et al. Use of a cDNA microarray to analyse gene expression patterns in human cancer. *Nat Genet*. 1996;14:457-460.
24. Southern E, Mir K, Shchepinov M. Molecular interactions on microarrays. *Nat Genet*. 1999;21:5-9.
25. Cheung VG, Morley M, Aguilar F, Massimi A, Kucherlapati R, Childs G. Making and reading microarrays. *Nat Genet*. 1999;21:15-19.
26. Duggan DJ, Bittner M, Chen Y, Meltzer P, Trent JM. Expression profiling using cDNA microarrays. *Nat Genet*. 1999;21:10-14.
27. Harrington CA, Rosenow C, Retief J. Monitoring gene expression using DNA microarrays. *Curr Opin Microbiol*. 2000;3:285-291.
28. Wang HY, Malek RL, Kwitek AE, et al. Assessing unmodified 70-mer oligonucleotide probe performance on glass-slide microarrays. *Genome Biol*. 2003;4:R5.
29. Lipshutz RJ, Fodor SP, Gingeras TR, Lockhart DJ. High density synthetic oligonucleotide arrays. *Nat Genet*. 1999;21:20-24.
30. Eberwine J, Yeh H, Miyashiro K, et al. Analysis of gene expression in single live neurons. *Proc Natl Acad Sci U S A*. 1992;89:3010-3014.
31. Van Gelder RN, von Zastrow ME, Yool A, Dement WC, Barchas JD, Eberwine JH. Amplified RNA synthesized from limited quantities of heterogeneous cDNA. *Proc Natl Acad Sci U S A*. 1990;87:1663-1667.
32. Quackenbush J. Computational analysis of microarray data. *Nat Rev Genet*. 2001;2:418-427.
33. Smyth GK, Speed T. Normalization of cDNA microarray data. *Methods*. 2003;31:265-273.
34. Yang YH, Dudoit S, Luu P, et al. Normalization for cDNA microarray data: a robust composite method addressing single and multiple slide systematic variation. *Nucleic Acids Res*. 2002;30:e15.
35. Eisen MB, Spellman PT, Brown PO, Botstein D. Cluster analysis and display of genome-wide expression patterns. *Proc Natl Acad Sci U S A*. 1998;95:14863-14868.
36. Tavazoie S, Hughes JD, Campbell MJ, Cho RJ, Church GM. Systematic determination of genetic network architecture. *Nat Genet*. 1999;22:281-285.
37. Heyer LJ, Kruglyak S, Yooseph S. Exploring expression data: identification and analysis of coexpressed genes. *Genome Res*. 1999;9:1106-1115.
38. Khan J, Simon R, Bittner M, et al. Gene expression profiling of alveolar rhabdomyosarcoma with cDNA microarrays. *Cancer Res*. 1998;58:5009-5013.

39. Raychaudhuri S, Stuart JM, Altman RB. Principal components analysis to summarize microarray experiments: application to sporulation time series. *Pac Symp Biocomput.* 2000:455-466.
40. Fellenberg K, Hauser NC, Brors B, Neutzner A, Hoheisel JD, Vingron M. Correspondence analysis applied to microarray data. *Proc Natl Acad Sci U S A.* 2001;98:10781-10786.
41. Tusher VG, Tibshirani R, Chu G. Significance analysis of microarrays applied to the ionizing radiation response. *Proc Natl Acad Sci U S A.* 2001;98:5116-5121.
42. Pawitan Y, Michiels S, Koscielny S, Gusnanto A, Ploner A. False discovery rate, sensitivity and sample size for microarray studies. *Bioinformatics.* 2005;21:3017-3024.
43. Furey TS, Cristianini N, Duffy N, Bednarski DW, Schummer M, Haussler D. Support vector machine classification and validation of cancer tissue samples using microarray expression data. *Bioinformatics.* 2000;16:906-914.
44. Khan J, Wei JS, Ringner M, et al. Classification and diagnostic prediction of cancers using gene expression profiling and artificial neural networks. *Nat Med.* 2001;7:673-679.
45. Tibshirani R, Hastie T, Narasimhan B, Chu G. Diagnosis of multiple cancer types by shrunken centroids of gene expression. *Proc Natl Acad Sci U S A.* 2002;99:6567-6572.
46. Sobin LH, Wittekind CL. TNM classification of malignant tumors (ed 6th). New York: John Wiley & Sons; 2002.
47. Mostofi FK, Davies CJ, Sesterhenn I. Histological typing of urinary bladder tumors. International classification of tumors (ed 2). Berlin: Springer; 1999.
48. Simon R. Diagnostic and prognostic prediction using gene expression profiles in high-dimensional microarray data. *Br J Cancer.* 2003;89:1599-1604.
49. Hosack DA, Dennis G, Jr., Sherman BT, Lane HC, Lempicki RA. Identifying biological themes within lists of genes with EASE. *Genome Biol.* 2003;4:R70.
50. Pinkel D, Albertson DG. Comparative genomic hybridization. *Annu Rev Genomics Hum Genet.* 2005;6:331-354.
51. Soussi T, Lozano G. p53 mutation heterogeneity in cancer. *Biochem Biophys Res Commun.* 2005;331:834-842.
52. Lu ML, Wikman F, Ørntoft TF, et al. Impact of alterations affecting the p53 pathway in bladder cancer on clinical outcome, assessed by conventional and array-based methods. *Clin Cancer Res.* 2002;8:171-179.
53. Kimura T, Suzuki H, Ohashi T, Asano K, Kiyota H, Eto Y. The incidence of thanatophoric dysplasia mutations in FGFR3 gene is higher in low-grade or superficial bladder carcinomas. *Cancer.* 2001;92:2555-2561.
54. Billerey C, Chopin D, Aubriot-Lorton MH, et al. Frequent FGFR3 mutations in papillary non-invasive bladder (pTa) tumors. *Am J Pathol.* 2001;158:1955-1959.
55. van Rhijn BW, Montironi R, Zwarthoff EC, Jobsis AC, van der Kwast TH. Frequent FGFR3 mutations in urothelial papilloma. *J Pathol.* 2002;198:245-251.
56. van Rhijn BW, van der Kwast TH, Vis AN, et al. FGFR3 and P53 characterize alternative genetic pathways in the pathogenesis of urothelial cell carcinoma. *Cancer Res.* 2004;64:1911-1914.

57. van Rhijn BW, Vis AN, van der Kwast TH, et al. Molecular grading of urothelial cell carcinoma with fibroblast growth factor receptor 3 and MIB-1 is superior to pathologic grade for the prediction of clinical outcome. *J Clin Oncol.* 2003;21:1912-1921.
58. van Rhijn BW, Lurkin I, Chopin DK, et al. Combined microsatellite and FGFR3 mutation analysis enables a highly sensitive detection of urothelial cell carcinoma in voided urine. *Clin Cancer Res.* 2003;9:257-263.
59. van Rhijn BW, van Tilborg AA, Lurkin I, et al. Novel fibroblast growth factor receptor 3 (FGFR3) mutations in bladder cancer previously identified in non-lethal skeletal disorders. *Eur J Hum Genet.* 2002;10:819-824.
60. Bakkar AA, Wallerand H, Radvanyi F, et al. FGFR3 and TP53 gene mutations define two distinct pathways in urothelial cell carcinoma of the bladder. *Cancer Res.* 2003;63:8108-8112.
61. Zieger K, Dyrskjöt L, Wiuf C, et al. Role of activating fibroblast growth factor receptor 3 mutations in the development of bladder tumors. *Clin Cancer Res.* 2005;11:7709-7719.
62. Bernard-Pierrot I, Brams A, Dunois-Larde C, et al. Oncogenic properties of the mutated forms of fibroblast growth factor receptor 3b. *Carcinogenesis.* 2006;27:740-747.
63. Blaveri E, Simko JP, Korkola JE, et al. Bladder cancer outcome and subtype classification by gene expression. *Clin Cancer Res.* 2005;11:4044-4055.
64. Dyrskjöt L, Kruhøffer M, Thykjaer T, et al. Gene expression in the urinary bladder: a common carcinoma in situ gene expression signature exists disregarding histopathological classification. *Cancer Res.* 2004;64:4040-4048.
65. Dyrskjöt L, Thykjaer T, Kruhøffer M, et al. Identifying distinct classes of bladder carcinoma using microarrays. *Nat Genet.* 2003;33:90-96.
66. Modlich O, Prisack HB, Pitschke G, et al. Identifying superficial, muscle-invasive, and metastasizing transitional cell carcinoma of the bladder: use of cDNA array analysis of gene expression profiles. *Clin Cancer Res.* 2004;10:3410-3421.
67. Mor O, Nativ O, Stein A, et al. Molecular analysis of transitional cell carcinoma using cDNA microarray. *Oncogene.* 2003;22:7702-7710.
68. Sanchez-Carbayo M, Succi ND, Lozano J, Saint F, Cordon-Cardo C. Defining molecular profiles of poor outcome in patients with invasive bladder cancer using oligonucleotide microarrays. *J Clin Oncol.* 2006;24:778-789.
69. Sanchez-Carbayo M, Succi ND, Lozano JJ, et al. Gene discovery in bladder cancer progression using cDNA microarrays. *Am J Pathol.* 2003;163:505-516.
70. Thykjaer T, Workman C, Kruhøffer M, et al. Identification of gene expression patterns in superficial and invasive human bladder cancer. *Cancer Res.* 2001;61:2492-2499.
71. Aaboe M, Marcussen N, Jensen KM, Thykjaer T, Dyrskjöt L, Ørntoft TF. Gene expression profiling of noninvasive primary urothelial tumours using microarrays. *Br J Cancer.* 2005;93:1182-1190.
72. Dunn GP, Bruce AT, Ikeda H, Old LJ, Schreiber RD. Cancer immunoediting: from immunosurveillance to tumor escape. *Nat Immunol.* 2002;3:991-998.
73. Khong HT, Restifo NP. Natural selection of tumor variants in the generation of "tumor escape" phenotypes. *Nat Immunol.* 2002;3:999-1005.



74. van Tilborg AA, de Vries A, de Bont M, Groenfeld LE, van der Kwast TH, Zwarthoff EC. Molecular evolution of multiple recurrent cancers of the bladder. *Hum Mol Genet.* 2000;9:2973-2980.
75. Höglund M. Bladder cancer, a two phased disease? *Semin Cancer Biol.* 2006.
76. Chaturvedi V, Li L, Hodges S, et al. Superimposed histologic and genetic mapping of chromosome 17 alterations in human urinary bladder neoplasia. *Oncogene.* 1997;14:2059-2070.
77. Czerniak B, Chaturvedi V, Li L, et al. Superimposed histologic and genetic mapping of chromosome 9 in progression of human urinary bladder neoplasia: implications for a genetic model of multistep urothelial carcinogenesis and early detection of urinary bladder cancer. *Oncogene.* 1999;18:1185-1196.
78. Czerniak B, Li L, Chaturvedi V, et al. Genetic modeling of human urinary bladder carcinogenesis. *Genes Chromosomes Cancer.* 2000;27:392-402.
79. Hartmann A, Moser K, Kriegmair M, Hofstetter A, Hofstaedter F, Knuechel R. Frequent genetic alterations in simple urothelial hyperplasias of the bladder in patients with papillary urothelial carcinoma. *Am J Pathol.* 1999;154:721-727.
80. Simon R, Eltze E, Schafer KL, et al. Cytogenetic analysis of multifocal bladder cancer supports a monoclonal origin and intraepithelial spread of tumor cells. *Cancer Res.* 2001;61:355-362.
81. Stoehr R, Knuechel R, Boecker J, et al. Histologic-genetic mapping by allele-specific PCR reveals intraurothelial spread of p53 mutant tumor clones. *Lab Invest.* 2002;82:1553-1561.
82. Denzinger S, Mohren K, Knuechel R, et al. Improved clonality analysis of multifocal bladder tumors by combination of histopathologic organ mapping, loss of heterozygosity, fluorescence in situ hybridization, and p53 analyses. *Hum Pathol.* 2006;37:143-151.
83. Cianciulli AM, Leonardo C, Guadagni F, et al. Genetic instability in superficial bladder cancer and adjacent mucosa: an interphase cytogenetic study. *Hum Pathol.* 2003;34:214-221.
84. Obermann EC, Meyer S, Hellge D, et al. Fluorescence in situ hybridization detects frequent chromosome 9 deletions and aneuploidy in histologically normal urothelium of bladder cancer patients. *Oncol Rep.* 2004;11:745-751.
85. Stoehr R, Zietz S, Burger M, et al. Deletions of chromosomes 9 and 8p in histologically normal urothelium of patients with bladder cancer. *Eur Urol.* 2005;47:58-63.
86. Fadl-Elmula I. Chromosomal changes in uroepithelial carcinomas. *Cell Chromosome.* 2005;4:1.
87. Richter J, Beffa L, Wagner U, et al. Patterns of chromosomal imbalances in advanced urinary bladder cancer detected by comparative genomic hybridization. *Am J Pathol.* 1998;153:1615-1621.
88. Richter J, Wagner U, Schraml P, et al. Chromosomal imbalances are associated with a high risk of progression in early invasive (pT1) urinary bladder cancer. *Cancer Res.* 1999;59:5687-5691.
89. Zhao J, Richter J, Wagner U, et al. Chromosomal imbalances in noninvasive papillary bladder neoplasms (pTa). *Cancer Res.* 1999;59:4658-4661.
90. Bruch J, Wöhr G, Hautmann R, et al. Chromosomal changes during progression of transitional cell carcinoma of the bladder and delineation of the

- amplified interval on chromosome arm 8q. *Genes Chromosomes Cancer*. 1998;23:167-174.
91. Simon R, Burger H, Semjonow A, Hertle L, Terpe HJ, Bocker W. Patterns of chromosomal imbalances in muscle invasive bladder cancer. *Int J Oncol*. 2000;17:1025-1029.
  92. Habuchi T, Devlin J, Elder PA, Knowles MA. Detailed deletion mapping of chromosome 9q in bladder cancer: evidence for two tumour suppressor loci. *Oncogene*. 1995;11:1671-1674.
  93. Keen AJ, Knowles MA. Definition of two regions of deletion on chromosome 9 in carcinoma of the bladder. *Oncogene*. 1994;9:2083-2088.
  94. Olumi AF, Tsai YC, Nichols PW, et al. Allelic loss of chromosome 17p distinguishes high grade from low grade transitional cell carcinomas of the bladder. *Cancer Res*. 1990;50:7081-7083.
  95. Wada T, Berggren P, Steineck G, et al. Bladder neoplasms--regions at chromosome 9 with putative tumour suppressor genes. *Scand J Urol Nephrol*. 2003;37:106-111.
  96. Habuchi T, Yoshida O, Knowles MA. A novel candidate tumour suppressor locus at 9q32-33 in bladder cancer: localization of the candidate region within a single 840 kb YAC. *Hum Mol Genet*. 1997;6:913-919.
  97. Kimura F, Florl AR, Seifert HH, et al. Destabilization of chromosome 9 in transitional cell carcinoma of the urinary bladder. *Br J Cancer*. 2001;85:1887-1893.
  98. Orlow I, Lianes P, Lacombe L, Dalbagni G, Reuter VE, Cordon-Cardo C. Chromosome 9 allelic losses and microsatellite alterations in human bladder tumors. *Cancer Res*. 1994;54:2848-2851.
  99. Simoneau AR, Spruck CH, 3rd, Gonzalez-Zulueta M, et al. Evidence for two tumor suppressor loci associated with proximal chromosome 9p to q and distal chromosome 9q in bladder cancer and the initial screening for GAS1 and PTC mutations. *Cancer Res*. 1996;56:5039-5043.
  100. Simoneau M, Aboukassim TO, LaRue H, Rousseau F, Fradet Y. Four tumor suppressor loci on chromosome 9q in bladder cancer: evidence for two novel candidate regions at 9q22.3 and 9q31. *Oncogene*. 1999;18:157-163.
  101. Cairns P, Polascik TJ, Eby Y, et al. Frequency of homozygous deletion at p16/CDKN2 in primary human tumours. *Nat Genet*. 1995;11:210-212.
  102. Williamson MP, Elder PA, Shaw ME, Devlin J, Knowles MA. p16 (CDKN2) is a major deletion target at 9p21 in bladder cancer. *Hum Mol Genet*. 1995;4:1569-1577.
  103. Aboukassim TO, LaRue H, Lemieux P, Rousseau F, Fradet Y. Alteration of the PATCHED locus in superficial bladder cancer. *Oncogene*. 2003;22:2967-2971.
  104. Habuchi T, Luscombe M, Elder PA, Knowles MA. Structure and methylation-based silencing of a gene (DBCCR1) within a candidate bladder cancer tumor suppressor region at 9q32-q33. *Genomics*. 1998;48:277-288.
  105. Nishiyama H, Takahashi T, Kakehi Y, Habuchi T, Knowles MA. Homozygous deletion at the 9q32-33 candidate tumor suppressor locus in primary human bladder cancer. *Genes Chromosomes Cancer*. 1999;26:171-175.

106. Hornigold N, Devlin J, Davies AM, Aveyard JS, Habuchi T, Knowles MA. Mutation of the 9q34 gene TSC1 in sporadic bladder cancer. *Oncogene*. 1999;18:2657-2661.
107. Knowles MA, Habuchi T, Kennedy W, Cuthbert-Heavens D. Mutation spectrum of the 9q34 tuberous sclerosis gene TSC1 in transitional cell carcinoma of the bladder. *Cancer Res*. 2003;63:7652-7656.
108. McGarvey TW, Maruta Y, Tomaszewski JE, Linnenbach AJ, Malkowicz SB. PTCH gene mutations in invasive transitional cell carcinoma of the bladder. *Oncogene*. 1998;17:1167-1172.
109. Nishiyama H, Gill JH, Pitt E, Kennedy W, Knowles MA. Negative regulation of G(1)/S transition by the candidate bladder tumour suppressor gene DBCCR1. *Oncogene*. 2001;20:2956-2964.
110. Hamed S, LaRue H, Hovington H, et al. Accelerated induction of bladder cancer in patched heterozygous mutant mice. *Cancer Res*. 2004;64:1938-1942.
111. Wang DS, Rieger-Christ K, Latini JM, et al. Molecular analysis of PTEN and MXI1 in primary bladder carcinoma. *Int J Cancer*. 2000;88:620-625.
112. Cairns P, Proctor AJ, Knowles MA. Loss of heterozygosity at the RB locus is frequent and correlates with muscle invasion in bladder carcinoma. *Oncogene*. 1991;6:2305-2309.
113. Cordon-Cardo C, Wartinger D, Petrylak D, et al. Altered expression of the retinoblastoma gene product: prognostic indicator in bladder cancer. *J Natl Cancer Inst*. 1992;84:1251-1256.
114. Logothetis CJ, Xu HJ, Ro JY, et al. Altered expression of retinoblastoma protein and known prognostic variables in locally advanced bladder cancer. *J Natl Cancer Inst*. 1992;84:1256-1261.
115. Cote RJ, Dunn MD, Chatterjee SJ, et al. Elevated and absent pRb expression is associated with bladder cancer progression and has cooperative effects with p53. *Cancer Res*. 1998;58:1090-1094.
116. Bruch J, Schulz WA, Haussler J, et al. Delineation of the 6p22 amplification unit in urinary bladder carcinoma cell lines. *Cancer Res*. 2000;60:4526-4530.
117. Oeggerli M, Tomovska S, Schraml P, et al. E2F3 amplification and overexpression is associated with invasive tumor growth and rapid tumor cell proliferation in urinary bladder cancer. *Oncogene*. 2004;23:5616-5623.
118. Blaveri E, Brewer JL, Roydasgupta R, et al. Bladder cancer stage and outcome by array-based comparative genomic hybridization. *Clin Cancer Res*. 2005;11:7012-7022.
119. Hurst CD, Fiegler H, Carr P, Williams S, Carter NP, Knowles MA. High-resolution analysis of genomic copy number alterations in bladder cancer by microarray-based comparative genomic hybridization. *Oncogene*. 2004;23:2250-2263.
120. Veltman JA, Fridlyand J, Pejavar S, et al. Array-based comparative genomic hybridization for genome-wide screening of DNA copy number in bladder tumors. *Cancer Res*. 2003;63:2872-2880.
121. Feber A, Clark J, Goodwin G, et al. Amplification and overexpression of E2F3 in human bladder cancer. *Oncogene*. 2004;23:1627-1630.
122. Sauter G, Moch H, Moore D, et al. Heterogeneity of erbB-2 gene amplification in bladder cancer. *Cancer Res*. 1993;53:2199-2203.

123. Coogan CL, Estrada CR, Kapur S, Bloom KJ. HER-2/neu protein overexpression and gene amplification in human transitional cell carcinoma of the bladder. *Urology*. 2004;63:786-790.
124. Simon R, Atefy R, Wagner U, et al. HER-2 and TOP2A coamplification in urinary bladder cancer. *Int J Cancer*. 2003;107:764-772.
125. Zaharieva BM, Simon R, Diener PA, et al. High-throughput tissue microarray analysis of 11q13 gene amplification (CCND1, FGF3, FGF4, EMS1) in urinary bladder cancer. *J Pathol*. 2003;201:603-608.
126. Watters AD, Latif Z, Forsyth A, et al. Genetic aberrations of c-myc and CCND1 in the development of invasive bladder cancer. *Br J Cancer*. 2002;87:654-658.
127. Lianes P, Orlov I, Zhang ZF, et al. Altered patterns of MDM2 and TP53 expression in human bladder cancer. *J Natl Cancer Inst*. 1994;86:1325-1330.
128. Jebar AH, Hurst CD, Tomlinson DC, Johnston C, Taylor CF, Knowles MA. FGFR3 and Ras gene mutations are mutually exclusive genetic events in urothelial cell carcinoma. *Oncogene*. 2005;24:5218-5225.
129. Cappellen D, De Oliveira C, Ricol D, et al. Frequent activating mutations of FGFR3 in human bladder and cervix carcinomas. *Nat Genet*. 1999;23:18-20.
130. Sibley K, Cuthbert-Heavens D, Knowles MA. Loss of heterozygosity at 4p16.3 and mutation of FGFR3 in transitional cell carcinoma. *Oncogene*. 2001;20:686-691.
131. van der Aa MN, van Leenders GJ, Steyerberg EW, et al. A new system for substaging pT1 papillary bladder cancer: a prognostic evaluation. *Hum Pathol*. 2005;36:981-986.
132. Wallerand H, Bakkar AA, de Medina SG, et al. Mutations in TP53, but not FGFR3, in urothelial cell carcinoma of the bladder are influenced by smoking: contribution of exogenous versus endogenous carcinogens. *Carcinogenesis*. 2005;26:177-184.
133. Rieger-Christ KM, Mourtzinou A, Lee PJ, et al. Identification of fibroblast growth factor receptor 3 mutations in urine sediment DNA samples complements cytology in bladder tumor detection. *Cancer*. 2003;98:737-744.
134. van Rhijn BW, Lurkin I, Radvanyi F, Kirkels WJ, van der Kwast TH, Zwarthoff EC. The fibroblast growth factor receptor 3 (FGFR3) mutation is a strong indicator of superficial bladder cancer with low recurrence rate. *Cancer Res*. 2001;61:1265-1268.
135. Eswarakumar VP, Lax I, Schlessinger J. Cellular signaling by fibroblast growth factor receptors. *Cytokine Growth Factor Rev*. 2005;16:139-149.
136. L'Hote CG, Knowles MA. Cell responses to FGFR3 signalling: growth, differentiation and apoptosis. *Exp Cell Res*. 2005;304:417-431.
137. Wuchner C, Hilbert K, Zabel B, Winterpacht A. Human fibroblast growth factor receptor 3 gene (FGFR3): genomic sequence and primer set information for gene analysis. *Hum Genet*. 1997;100:215-219.
138. Scotet E, Houssaint E. The choice between alternative IIIb and IIIc exons of the FGFR-3 gene is not strictly tissue-specific. *Biochim Biophys Acta*. 1995;1264:238-242.
139. Agazie YM, Movilla N, Ischenko I, Hayman MJ. The phosphotyrosine phosphatase SHP2 is a critical mediator of transformation induced by the oncogenic fibroblast growth factor receptor 3. *Oncogene*. 2003;22:6909-6918.

140. Burks J, Agazie YM. Modulation of alpha-catenin Tyr phosphorylation by SHP2 positively effects cell transformation induced by the constitutively active FGFR3. *Oncogene*. 2006.
141. Vajo Z, Francomano CA, Wilkin DJ. The molecular and genetic basis of fibroblast growth factor receptor 3 disorders: the achondroplasia family of skeletal dysplasias, Muenke craniosynostosis, and Crouzon syndrome with acanthosis nigricans. *Endocr Rev*. 2000;21:23-39.
142. Webster MK, Donoghue DJ. FGFR activation in skeletal disorders: too much of a good thing. *Trends Genet*. 1997;13:178-182.
143. Naski MC, Wang Q, Xu J, Ornitz DM. Graded activation of fibroblast growth factor receptor 3 by mutations causing achondroplasia and thanatophoric dysplasia. *Nat Genet*. 1996;13:233-237.
144. Webster MK, D'Avis PY, Robertson SC, Donoghue DJ. Profound ligand-independent kinase activation of fibroblast growth factor receptor 3 by the activation loop mutation responsible for a lethal skeletal dysplasia, thanatophoric dysplasia type II. *Mol Cell Biol*. 1996;16:4081-4087.
145. Webster MK, Donoghue DJ. Constitutive activation of fibroblast growth factor receptor 3 by the transmembrane domain point mutation found in achondroplasia. *Embo J*. 1996;15:520-527.
146. Adar R, Monsonogo-Ornan E, David P, Yayon A. Differential activation of cysteine-substitution mutants of fibroblast growth factor receptor 3 is determined by cysteine localization. *J Bone Miner Res*. 2002;17:860-868.
147. Colvin JS, Bohne BA, Harding GW, McEwen DG, Ornitz DM. Skeletal overgrowth and deafness in mice lacking fibroblast growth factor receptor 3. *Nat Genet*. 1996;12:390-397.
148. Deng C, Wynshaw-Boris A, Zhou F, Kuo A, Leder P. Fibroblast growth factor receptor 3 is a negative regulator of bone growth. *Cell*. 1996;84:911-921.
149. Wu R, Connolly D, Ngelangel C, Bosch FX, Munoz N, Cho KR. Somatic mutations of fibroblast growth factor receptor 3 (FGFR3) are uncommon in carcinomas of the uterine cervix. *Oncogene*. 2000;19:5543-5546.
150. Sibley K, Stern P, Knowles MA. Frequency of fibroblast growth factor receptor 3 mutations in sporadic tumours. *Oncogene*. 2001;20:4416-4418.
151. Chesi M, Nardini E, Brents LA, et al. Frequent translocation t(4;14)(p16.3;q32.3) in multiple myeloma is associated with increased expression and activating mutations of fibroblast growth factor receptor 3. *Nat Genet*. 1997;16:260-264.
152. Karoui M, Hofmann-Radvanyi H, Zimmermann U, et al. No evidence of somatic FGFR3 mutation in various types of carcinoma. *Oncogene*. 2001;20:5059-5061.
153. Logie A, Dunois-Larde C, Rosty C, et al. Activating mutations of the tyrosine kinase receptor FGFR3 are associated with benign skin tumors in mice and humans. *Hum Mol Genet*. 2005;14:1153-1160.
154. Hafner C, van Oers JM, Hartmann A, et al. High Frequency of FGFR3 Mutations in Adenoid Seborrhheic Keratoses. *J Invest Dermatol*. 2006.
155. Hafner C, van Oers JM, Vogt T, et al. Mosaicism of activating FGFR3 mutations in human skin causes epidermal nevi. *J Clin Invest*. 2006.

156. Trudel S, Li ZH, Wei E, et al. CHIR-258, a novel, multitargeted tyrosine kinase inhibitor for the potential treatment of t(4;14) multiple myeloma. *Blood*. 2005;105:2941-2948.
157. Vogelstein B, Lane D, Levine AJ. Surfing the p53 network. *Nature*. 2000;408:307-310.
158. Ryk C, Berggren P, Kumar R, et al. Influence of GSTM1, GSTT1, GSTP1 and NAT2 genotypes on the p53 mutational spectrum in bladder tumours. *Int J Cancer*. 2005;113:761-768.
159. Malats N, Bustos A, Nascimento CM, et al. P53 as a prognostic marker for bladder cancer: a meta-analysis and review. *Lancet Oncol*. 2005;6:678-686.
160. Cordon-Cardo C, Dalbagni G, Saez GT, et al. p53 mutations in human bladder cancer: genotypic versus phenotypic patterns. *Int J Cancer*. 1994;56:347-353.
161. Momand J, Wu HH, Dasgupta G. MDM2--master regulator of the p53 tumor suppressor protein. *Gene*. 2000;242:15-29.
162. Simon R, Struckmann K, Schraml P, et al. Amplification pattern of 12q13-q15 genes (MDM2, CDK4, GLI) in urinary bladder cancer. *Oncogene*. 2002;21:2476-2483.
163. Jahnsen S, Karlsson MG. Tumor mapping of regional immunostaining for p21, p53, and mdm2 in locally advanced bladder carcinoma. *Cancer*. 2000;89:619-629.
164. Shiina H, Igawa M, Shigeno K, et al. Clinical significance of mdm2 and p53 expression in bladder cancer. A comparison with cell proliferation and apoptosis. *Oncology*. 1999;56:239-247.
165. Koss LG. Mapping of the urinary bladder: its impact on the concepts of bladder cancer. *Hum Pathol*. 1979;10:533-548.
166. Obermann EC, Junker K, Stoehr R, et al. Frequent genetic alterations in flat urothelial hyperplasias and concomitant papillary bladder cancer as detected by CGH, LOH, and FISH analyses. *J Pathol*. 2003;199:50-57.
167. Chow NH, Cairns P, Eisenberger CF, et al. Papillary urothelial hyperplasia is a clonal precursor to papillary transitional cell bladder cancer. *Int J Cancer*. 2000;89:514-518.
168. Hartmann A, Schlake G, Zaak D, et al. Occurrence of chromosome 9 and p53 alterations in multifocal dysplasia and carcinoma in situ of human urinary bladder. *Cancer Res*. 2002;62:809-818.
169. Hopman AH, Kamps MA, Speel EJ, Schapers RF, Sauter G, Ramaekers FC. Identification of chromosome 9 alterations and p53 accumulation in isolated carcinoma in situ of the urinary bladder versus carcinoma in situ associated with carcinoma. *Am J Pathol*. 2002;161:1119-1125.
170. Rosin MP, Cairns P, Epstein JI, Schoenberg MP, Sidransky D. Partial allelotype of carcinoma in situ of the human bladder. *Cancer Res*. 1995;55:5213-5216.
171. Spruck CH, 3rd, Ohneseit PF, Gonzalez-Zulueta M, et al. Two molecular pathways to transitional cell carcinoma of the bladder. *Cancer Res*. 1994;54:784-788.
172. Zhang ZT, Pak J, Huang HY, et al. Role of Ha-ras activation in superficial papillary pathway of urothelial tumor formation. *Oncogene*. 2001;20:1973-1980.

173. Lorenzo-Romero JG, Salinas-Sanchez AS, Gimenez-Bachs JM, et al. Prognostic implications of p53 gene mutations in bladder tumors. *J Urol.* 2003;169:492-499.
174. Zhang ZT, Pak J, Shapiro E, Sun TT, Wu XR. Urothelium-specific expression of an oncogene in transgenic mice induced the formation of carcinoma in situ and invasive transitional cell carcinoma. *Cancer Res.* 1999;59:3512-3517.
175. Hernandez S, Lopez-Knowles E, Lloreta J, et al. FGFR3 and Tp53 mutations in T1G3 transitional bladder carcinomas: independent distribution and lack of association with prognosis. *Clin Cancer Res.* 2005;11:5444-5450.
176. Hafner C, Knuechel R, Stoehr R, Hartmann A. Clonality of multifocal urothelial carcinomas: 10 years of molecular genetic studies. *Int J Cancer.* 2002;101:1-6.
177. Slaughter DP, Southwick HW, Smejkal W. Field cancerization in oral stratified squamous epithelium; clinical implications of multicentric origin. *Cancer.* 1953;6:963-968.
178. Sidransky D, Frost P, Von Eschenbach A, Oyasu R, Preisinger AC, Vogelstein B. Clonal origin bladder cancer. *N Engl J Med.* 1992;326:737-740.
179. Cheng L, Gu J, Ulbright TM, et al. Precise microdissection of human bladder carcinomas reveals divergent tumor subclones in the same tumor. *Cancer.* 2002;94:104-110.
180. Fadl-Elmula I, Gorunova L, Mandahl N, et al. Cytogenetic monoclonality in multifocal uroepithelial carcinomas: evidence of intraluminal tumour seeding. *Br J Cancer.* 1999;81:6-12.
181. Hartmann A, Rosner U, Schlake G, et al. Clonality and genetic divergence in multifocal low-grade superficial urothelial carcinoma as determined by chromosome 9 and p53 deletion analysis. *Lab Invest.* 2000;80:709-718.
182. Hafner C, Knuechel R, Zanardo L, et al. Evidence for oligoclonality and tumor spread by intraluminal seeding in multifocal urothelial carcinomas of the upper and lower urinary tract. *Oncogene.* 2001;20:4910-4915.
183. Primdahl H, Wikman FP, von der Maase H, Zhou XG, Wolf H, Ørntoft TF. Allelic imbalances in human bladder cancer: genome-wide detection with high-density single-nucleotide polymorphism arrays. *J Natl Cancer Inst.* 2002;94:216-223.
184. Kim MS, Jeong J, Majewski T, et al. Evidence for alternative candidate genes near RB1 involved in clonal expansion of in situ urothelial neoplasia. *Lab Invest.* 2006;86:175-190.
185. Kim JH, Tuziak T, Hu L, et al. Alterations in transcription clusters underlie development of bladder cancer along papillary and nonpapillary pathways. *Lab Invest.* 2005;85:532-549.
186. Wild PJ, Herr A, Wissmann C, et al. Gene expression profiling of progressive papillary noninvasive carcinomas of the urinary bladder. *Clin Cancer Res.* 2005;11:4415-4429.
187. Yang F, Tuxhorn JA, Ressler SJ, McAlhany SJ, Dang TD, Rowley DR. Stromal expression of connective tissue growth factor promotes angiogenesis and prostate cancer tumorigenesis. *Cancer Res.* 2005;65:8887-8895.
188. Rhodes DR, Yu J, Shanker K, et al. Large-scale meta-analysis of cancer microarray data identifies common transcriptional profiles of neoplastic

- 
- transformation and progression. *Proc Natl Acad Sci U S A.* 2004;101:9309-9314.
189. Dyrskjot L, Zieger K, Kruhoffer M, et al. A molecular signature in superficial bladder carcinoma predicts clinical outcome. *Clin Cancer Res.* 2005;11:4029-4036.