



# LUND UNIVERSITY

## BEAM DYNAMICS STUDIES OF THE ESS LINAC USING A NEW MULTICELL CAVITY MODEL

de Prisco, Renato

*Published in:*  
Proceedings of the 9th International Particle Accelerator Conference

2018

*Document Version:*  
Publisher's PDF, also known as Version of record

[Link to publication](#)

*Citation for published version (APA):*  
de Prisco, R. (2018). BEAM DYNAMICS STUDIES OF THE ESS LINAC USING A NEW MULTICELL CAVITY MODEL. In *Proceedings of the 9th International Particle Accelerator Conference* (pp. 870)

*Total number of authors:*  
1

*Creative Commons License:*  
CC BY

### General rights

Unless other specific re-use rights are stated the following general rights apply:  
Copyright and moral rights for the publications made accessible in the public portal are retained by the authors and/or other copyright owners and it is a condition of accessing publications that users recognise and abide by the legal requirements associated with these rights.

- Users may download and print one copy of any publication from the public portal for the purpose of private study or research.
- You may not further distribute the material or use it for any profit-making activity or commercial gain
- You may freely distribute the URL identifying the publication in the public portal

Read more about Creative commons licenses: <https://creativecommons.org/licenses/>

### Take down policy

If you believe that this document breaches copyright please contact us providing details, and we will remove access to the work immediately and investigate your claim.

LUND UNIVERSITY

PO Box 117  
221 00 Lund  
+46 46-222 00 00

# BEAM DYNAMICS STUDIES OF THE ESS LINAC USING A NEW MULTICELL CAVITY MODEL

R. De Prisco\*, Lund University, Lund, Sweden  
 C. Plostinar, ESS, Lund, Sweden

## Abstract

The European Spallation Source is designed to deliver 5 MW proton beam power on the target while keeping the beam induced losses below 1 W/m throughout the LINAC. This implies the need of accurate models to correctly describe the longitudinal beam dynamics within the multi-cell cavities. In all the previous error studies the cells of a multi-cell cavity were modelled as a sequence of independent gaps and the errors were applied directly on the amplitude of each cell accelerating field, considered as random variable. In this paper, instead, we present a new detailed analysis of the effect of the error tolerances on the beam dynamics including a new model to calculate the amplitude errors of the accelerating field in the multi-cell cavities: errors are applied on the geometrical parameters of each cavity; then the accelerating field is calculated solving the Maxwell equations over all the cavity.

## INTRODUCTION

The following multi-cell cavities are present in the ESS LINAC: RFQ, DTL, spoke, medium- $\beta$ , high- $\beta$ .

Generally speaking the cells in a cavity are just a virtual abstraction useful to describe the solutions (modes) of the Maxwell equations in the cavity.

Many particle tracking codes describe all the cells in the same cavity as a sequence of independent one-cell cavities (or gaps). It is up to the user to make sure that the accelerating field of a sequence of independent gaps is a solution of the Maxwell equations.

## THE ACCELERATING FIELD IN A MULTI-CELL CAVITY

In the previous error studies [1] [2] the multi-cell cavities were modeled as a sequence of independent gaps as shown in the Fig. 1 for a cavity of 3 cells.

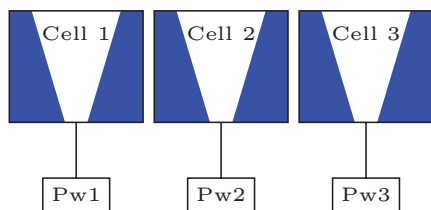


Figure 1: Multi-cell cavity as sequence of independent gaps.

The error of the accelerating field  $E_0$  was modeled, cell by cell, as a random variable uniformly distributed within its tolerance.

\* renato.deprisco@ess.se

In this paper, instead, an iterative procedure is defined to calculate  $E_0$  for each cavity: a set of tolerances is specified for all the geometrical parameters of the cavity, then the electromagnetic field is calculated solving the Maxwell equations. The algorithm is shown in the Fig. 2 where  $E_d$  is the desired flatness of the accelerating field.

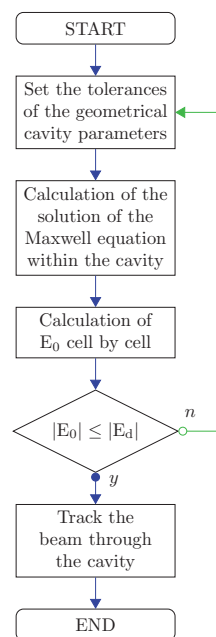


Figure 2: Algorithm to calculate the accelerating field  $E_0$ .

It is important to emphasize that a mechanical error in a cell influences the accelerating field in all the cavity and not only in that cell [3] as schematically shown in the Fig. 3.

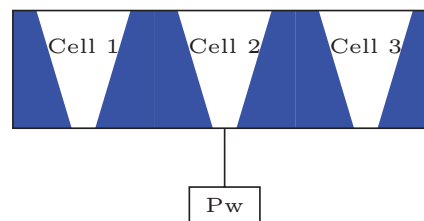


Figure 3: Multi-cell cavity model.

For this reason considering the cells of the same cavity as independent gaps and, consequently, modeling the error of the accelerating field  $E_0$ , cell by cell, as a random variable uniformly distributed within its tolerance is an unrealistic approach.

Since the ESS will send the beam to a fixed tungsten target the emittance is not as important a factor as for the injectors. On the other hand the beam halo should be carefully investigated because it can cause particle loss which can damage the accelerator components and lead to an unwanted radioactivity.

To analyze the difference of the beam dynamics due to the two cavity models we will use the Drift Tube Linac, DTL. The DTL accelerates the proton beam with a 62.5 mA pulse peak current from 3 to 89 MeV. It is designed to operate at 352.21 MHz with a duty cycle of 4 % and it is composed by 5 cavities (or tanks) of 61, 34, 29, 26, 23 cells each [4] [5].

The geometrical details near the Drift Tube, DT, nose of a DTL right half cell are shown in the Fig. 4. The full gap is  $g$  and the full cell length is  $L$ . The bore radius is  $R_b$ . The full cavity diameter is  $D$  and the DT diameter is  $d$ . The flat length is  $F$ . The face angle,  $\alpha$ , is the angle that the DT face makes with the vertical. There are three circular arcs on the DT profile: the corner radius,  $R_c$ , the inner nose radius,  $R_i$ , and the outer nose radius,  $R_o$ .

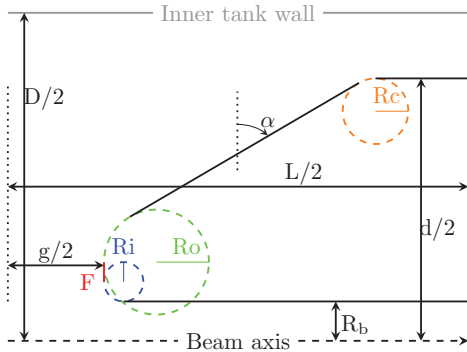


Figure 4: Details of right half cell drift tube.

At first the errors of each parameter are applied individually in order to evaluate their individual effect on the flatness of the accelerating field without the post coupler stabilization system. This step is useful to set the *preliminary* individual tolerances.

In a second step all the errors are applied simultaneously in order to set the *final* tolerances and to define the *associated* layout of the stabilization system that keeps the flatness of the accelerating field within the desired limit. We define the *optimum lengths* of the PCs as the lengths for which there is the *confluence* [3]. The PCs are supposed inserted with their *optimum length* [6] [7]. We suppose that *all the interfaces are properly integrated* [8] [9].

### Comparison of the Two Models of the Multi-cell Cavities

The following *static* [10] errors are included, modeled as random variables uniformly distributed within their tolerances and changed in the same way, linac by linac, for all the 4 studies: the quadrupole transverse position,  $dx$ ,  $dy$ , rotation,  $d\phi_x$ ,  $d\phi_y$ ,  $d\phi_z$ , gradient,  $dG$ , and multipoles,  $dG_n$

( $n=3,4,5$ ), errors; cell field phase,  $d\phi_s$ , error; cavity field,  $dE_k$ , and phase,  $d\phi_k$ , error.

The tolerance of the field flatness,  $dE_0$ , is gradually increased from 1% to 4% for all the five tanks. Then the error studies are repeated with the *only* difference that  $E_0$  is modeled as a random variable uniformly distributed within its tolerance.

For the beam dynamics studies reported in this paper the beam is generated at the RFQ input with a gaussian distribution truncated at  $4\sigma$ . The nominal RFQ output distribution is saved and used as input distribution for the rest of the ESS LINAC. The beam parameters at the RFQ output and their tolerances are reported in Table 1. The number of particles used is 1 M and the statistic of each study is based on 1000 linacs.

The space charge routine used is PICNIC [10] and we underline again that only the *static* errors [10] are considered.

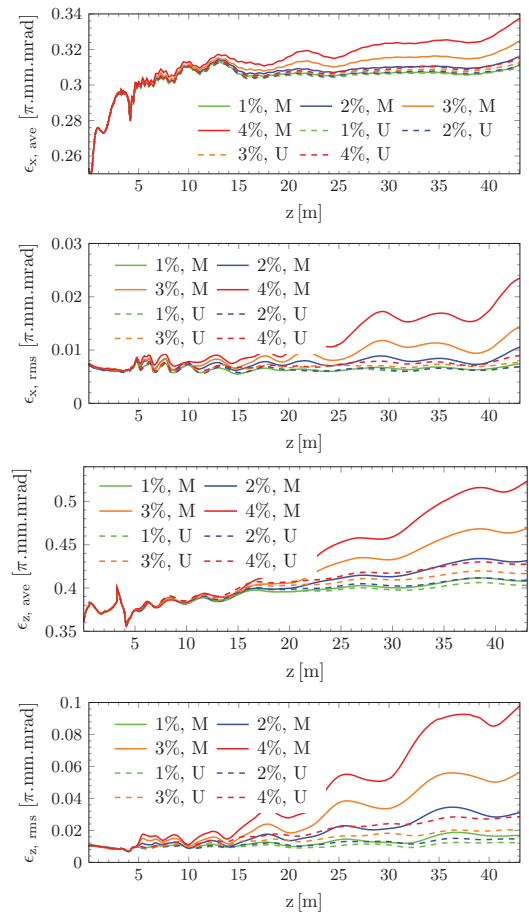


Figure 5: From top to bottom: average and RMS of the horizontal emittance,  $\epsilon_{x, \text{ave}}$ , average and RMS of the longitudinal emittance,  $\epsilon_{z, \text{ave}}$ . The letter M indicates that the accelerating field is calculated solving the Maxwell equations while the letter U indicates that  $E_0$  is modeled as a random variable uniformly distributed within its tolerance. The percentage indicates the tolerance of  $E_0$ .

From the Fig. 5 is clear that modeling a long cavity as a sequence of independent gaps underestimates the emittance



- [2] M. Comunian, F. Grespan, and A. Pisent, “ERROR study on normal conducting ESS LINAC,” in *Proc. 27th Linear Accelerator Conf. (LINAC’14)*, Geneva, Switzerland, September 2014, paper THPP086, pp. 1047–1049.
- [3] R. De Prisco *et al.*, “ESS DTL RF modelization: field tuning and stabilization”, in *Proc. 4th Int. Particle Accelerator Conf. (IPAC’13)*, Shanghai, China, May 2013, paper THPWO070, pp. 3918–3920.
- [4] R. De Prisco *et al.*, “ESS DTL status: redesign and optimizations”, in *Proc. 5th Int. Particle Accelerator Conf. (IPAC’14)*, Dresden, Germany, June 2014, paper THPME041, pp. 3314–3316.
- [5] F. Grespan *et al.*, “ESS DTL Design and Drift Tube Prototypes,” in *Proc. LINAC’14*, Geneva, Switzerland, Sep. 2014, paper THPP087, p. 1050.
- [6] R. De Prisco *et al.*, “Effect of the field maps on the beam dynamics of the ESS drift tube LINAC”, in *Proc. 6th Int. Particle Accelerator Conf. (IPAC’15)*, Richmond, Virginia, May 2015, paper THPF078, pp. 3864–3866.
- [7] R. De Prisco *et al.*, “Implication of manufacturing errors on the layout of the stabilization system and on the field quality in a drift tube linac - RF DTL error study,” in *Proc. 28th Linear Accelerator Conf. (LINAC’16)*, East Lansing, Michigan, September 2016. paper MOPLR68, pp. 290–293.
- [8] R. De Prisco *et al.*, “Integration of interfaces and stabilization system in the design of a drift tube linac,” in *Proc. 28th Linear Accelerator Conf. (LINAC’16)*, East Lansing, Michigan, September 2016. paper MOPLR70, pp. 294–297.
- [9] F. Grespan, “RF properties of the tank 5, pickup, RF coupler, RF windows, post coupler, thermo-mechanical simulations, field tuning, tuning in operation,” <http://indico.esss.lu.se/event/348/session/3/material/2/0.pptx>
- [10] R. De Prisco *et al.*, “ERROR study on normal conducting ESS LINAC,” in *Proc. 27th Linear Accelerator Conf. (LINAC’14)*, Geneva, Switzerland, September 2014, paper THPP042, pp. 942–944.